



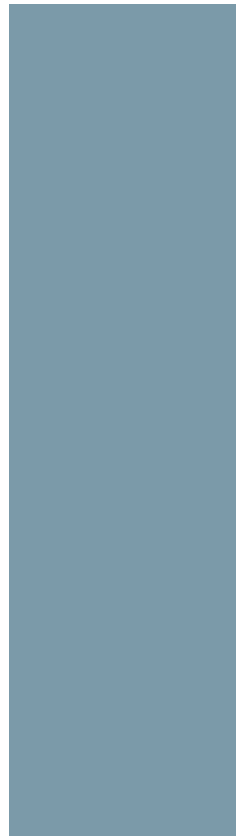
CCTV

Fixed dome cameras:
for discreet around-the-
clock surveillance



Answers for infrastructure.

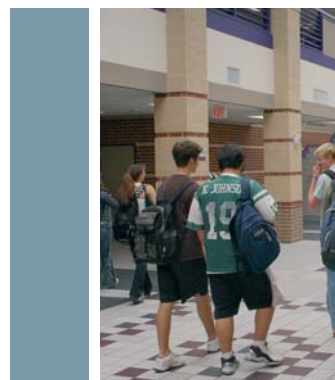
SIEMENS



The right model for every situation: fixed dome cameras by Siemens

This attractive range of aesthetically appealing dome cameras includes 6 different models for monitoring indoor and outdoor areas. The diverse monofocal, varifocal and vandal-resistant models are intended for use wherever discreet, unobtrusive surveillance is needed, such as in retail stores, restaurants, foyers of hotels, warehouses, petrol stations and other commercial premises.

Schools



True 24 hour monitoring with excellent image quality

■ Day/night models with mechanical IR cut filter for true 24 hour monitoring

All day/night models boast a mechanical infrared cut filter to ensure true colour reproduction. They not only provide the highest quality colour images by day, as when using infrared lighting, they also produce great monochrome pictures at night.

■ Vandal-resistant, with an IP66 protection rating for outdoor use

The vandal-resistant models are enclosed in a die-cast, heavy-duty aluminium housing, with a high-impact polycarbonate bubble that can withstand an accidental or deliberate blow-up of up to 1000 kg. These models have an IP66 protection rating for outdoor use in all weather conditions.

■ Greater viewing angle

All varifocal models are equipped with auto-iris lens. These lenses have 76.9° viewing angle. However, the vandal-resistant, varifocal model CVWC1325 also has a 100.2° viewing angle, so that the dome can be mounted in the corner of a room and see everything.

■ All models IP enabled by combination with an IP base

Access to the cameras is possible from any PC with an Ethernet connection and a standard Web browser simply combining the dome cameras with an IP base – makes an attractive unit capable of integration with the full spectrum of IP solutions on an Ethernet network.

■ Versatile configuration via remote setup kit

All day/night and colour models can be remotely programmed using the remote setup kit.

■ Service monitor cable for in-situ setup

The configuration, alignment and setting of the camera view can be done directly on location using a test monitor. This facilitates operational setup of the camera, requires less effort and is therefore quicker and easier to install.

■ Full 360° setup for pan, tilt and rotation

All models can be adjusted perfectly in each installation, whether ceiling or wall mounted, with 360° pan, tilt and rotation.

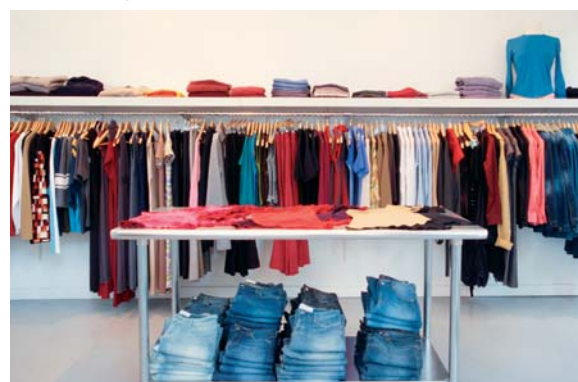
Highlights

- Day/night models with mechanical IR cut filter for true 24 hour monitoring
- Vandal-resistant models, with an IP66 protection rating for outdoor use
- All models IP enabled in combination with an IP base
- Versatile configuration via remote setup kit
- Service monitor connector for in-situ setup
- Full 360° setup for pan, tilt and rotation

Hotel foyers



Commercial premises





The right functionality for every situation

■ Monofocal, fixed dome camera

The Siemens fixed dome range includes stylish internal monofocal model with 1/3" CCD and 3.7 lens, with standard high-resolution colour imaging.

This is an attractive camera with clear or tinted bubble and includes service monitor connector and cable for connection to a portable monitor, ensuring a quick set-up and easy installation. CFFC1317 model has an RS232 port to connect to PC, to allow easy remote setup via the optional remote setup kit.

Accessories include tinted bubbles, replacement clear bubbles, remote setup

kit, plus 2.9 mm, 6 mm and 12 mm lenses interchangeable with the original 3.7 mm lens supplied as standard.

■ Varifocal, fixed dome cameras

In addition to the monofocal domes, the internal range also includes two simple, stylish varifocal models all 1/3" CCD with a 3.7–12 mm, auto-iris lens. Variables include a choice of high-resolution colour or day/night imaging, IR-sensitive operation (the CFVS1317 has a mechanical infrared cut filter which ensures perfect colour reproduction performance during the day and when used with an infrared illuminator, as lighting levels fall – will switch automatically to monochrome at

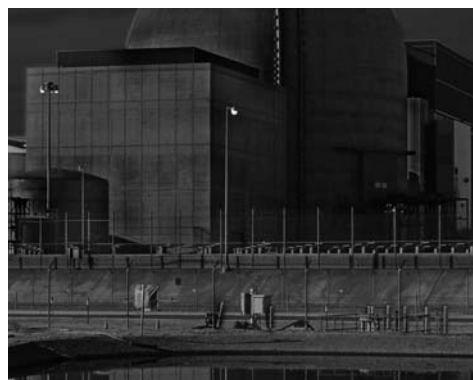
night to give crisp, sharp images 24 hours a day).

Both the colour and day/night models can be connected to a PC via a remote adapter, for remotely setting up various parameters and downloading/uploading these. Accessories include clear bubbles, replacement tinted bubbles and remote setup kit.

■ Vandal-resistant, varifocal, fixed dome cameras IP66

To complete the range, allowing both internal and external installations, are three vandal-resistant varifocal models all with an auto-iris lens and rated IP66 in

Day/night models automatically change from colour pictures by day, to monochrome pictures at night – true 24 hour surveillance!



Monofocal, fixed dome cameras

These monofocal, fixed dome cameras are best suited to smaller video surveillance installations in locations such as:

- smaller shops, stores and offices
- schools
- hotels
- restaurants
- petrol stations



1000 kg high impact, polycarbonate bubble and heavy-duty, die-cast, aluminium enclosure.

The robust construction of this camera is specifically designed to work faultlessly even in vandalism encountered areas.

Variables include a choice of colour or day/night imaging, IR-sensitive operation (the CVVS1317 has a mechanical infrared cut filter which ensures perfect colour reproduction performance during the day and when used with an infrared illuminator, as lighting levels fall – will switch automatically to monochrome at night to give crisp, sharp images 24 hours a day).

In monochrome mode the camera is IR sensitive and delivers ideal images, also with IR illumination.

They are all attractive high-resolution cameras with tinted bubbles which can be ceiling-mounted or wall-mounted for 360° setup (pan, tilt and rotation) and include service monitor connection and cable for local, easy installation. Flexible mounting options include flush ceiling mount or the use of a wall mount bracket to keep the dome horizontal.

Also included as standard is an RS232 cable with remote setup software for use with the colour and day/night models.

The software allows easy programming, then uploading of these settings to the camera, or reading settings from the camera and saving them to the PC.

All high-resolution colour and day/night models (monofocal and varifocal, as well as vandal-resistant) are certified according to the German BGV with "UVV Kassen" and are therefore ideal for banking applications.

1000 kg impact-resistant and IP66 protection rating

Varifocal, fixed dome cameras

Vandal-resistant, varifocal, fixed dome cameras

These varifocal, fixed dome cameras are best suited to larger, indoor video surveillance installations in locations such as:

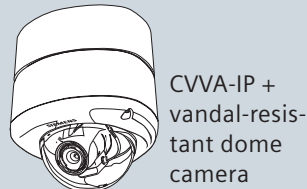
- larger shops, stores and offices
- flexible viewing installations
- shopping centres

These rugged, vandal-resistant, varifocal, fixed dome cameras are best suited to indoor or outdoor video surveillance installations – wherever the possibility of wilful or malicious damage may occur – such as:

- railway, bus and coach stations
- airports, docks
- leisure centres, sports grounds and concert venues
- shopping centres and cinema car parks
- banking halls and inside ATM kiosks
- on the outside of offices, public buildings



The entire range of fixed dome cameras is IP enabled when using the optional IP module, which allows images to be transmitted over an Ethernet network.

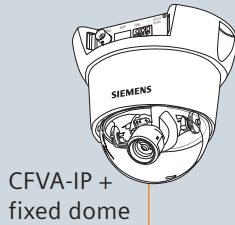


CVVA-IP + vandal-resistant dome camera

The SISTORE MX NVS software allows up to 16 IP cameras to be displayed and digitally recorded on a PC. It is also possible to configure cameras using the software.

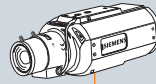


SISTORE MX NVS software

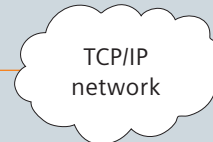


CFVA-IP + fixed dome

CCIS1337 is a true hybrid IP camera from Siemens with both BNC and Ethernet connections.

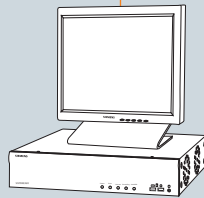


CCIS1337



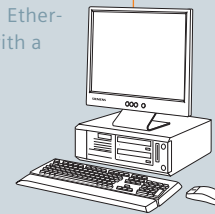
TCP/IP network

Up to 32 IP cameras can be connected to the SISTORE MX system. Doing so allows true digital the recording of the cameras and displaying them on a VGA monitor, and also provides the full functionality of the digital video recorder, such as motion and sabotage detection or alarm generation.



SISTORE MX

Access to the IP cameras is possible from any PC connected to an Ethernet network and equipped with a standard Web browser.



Web browser

All fixed dome models IP enabled by Hybrid Technology from Siemens

The complete range of fixed dome models are IP enabled due to Hybrid Technology from Siemens. This is truly the best of both worlds, as a standard analogue BNC connection is present for use in traditional video surveillance systems. However, with Hybrid Technology, the cameras are future-proof, because as the system is transferred to digital (i.e. swapped from coaxial cable to Ethernet transmission), the cameras can be combined with an IP module with an Ethernet connector, to allow direct connection to the network.

Siemens IP cameras capture and send live streaming video directly over an IP network that enables users to view and manage the camera using a standard Web browser or SISTORE NVR (Network Video Recorder) software on any local or remote computer on a network. Therefore transmission distances are no longer a problem.

Installation

An IP based Ethernet network infrastructure is often already in place, which means the IP camera can easily be connected to the nearest network connection. Simply set the IP address and you're up and running! Adding more IP cameras to the system is as easy as the first one.

SISTORE MX NVS – Network Video Software

SISTORE MX NVS software allows all the functionality of the highly successful SISTORE MX digital recording system to take place directly on a PC. This means it is possible to record IP cameras on a PC, via password access to restrict the viewing of the cameras and utilise the many multi-screen viewing formats possible (up to 32 IP cameras can be recorded and viewed simultaneously). Of course, if required, it is still possible to manage any alarms connected, or make use of the in-built motion detection and sabotage detection alarms.

SISTORE MX NVR – unique, highly available Network Video Recorder

The ultra-modern, industry-oriented Network Video Recorder SISTORE MX NVR supports recording and management of up to 16 IP cameras, plus functionalities like motion detection, sabotage protection and a self monitoring system.

Access to IP cameras via SISTORE MX NVS software






Technical overview

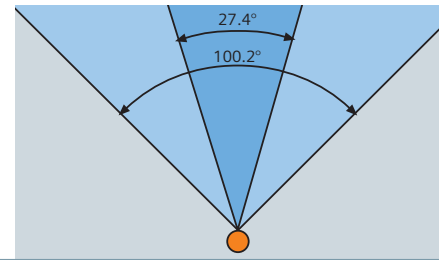
	Monofocal	Varifocal	
	CFFC1317	CFVS1317	CFVC1317
			
	Colour	Day/night	Colour
CCD size	1/3"	1/3"	1/3"
TV lines	540	540	540
Resolution	High	High	High
Lens type	Manual iris	Auto-iris	Auto-iris
Focal length	3.7 mm	3.7 mm ~ 12 mm	3.7 mm ~ 12 mm
Horizontal angle of view	70°	22.7° ~ 76.9°	22.7° ~ 76.9°
Minimum illumination (@ 50 IRE)			
– Clear bubble	0.13 Lux	0.29 Lux (colour)/ 0.21 Lux (mono)	0.24 Lux
– Tinted bubble	0.26 Lux	0.53 Lux (colour)/ 0.43 Lux (mono)	0.46 Lux
Dual power 12 V DC / 24 V AC	■	■	■
TV standard	PAL	PAL	PAL
S/N ratio	> 50 dB	> 50 dB	> 50 dB
Back light compensation (BLC)	■	■	■
Colour/monochrome switchable		■	
Infrared cut filter		Mechanical	
Automatic gain control (AGC)	■	■	■
Electronic shutter	Auto / 1/50~1/100,000 s	Auto / 1/50~1/100,000 s	Auto / 1/50~1/100,000 s
Line lock synchronisation	■	■	■
Remote programming	■	■	■
RS232 interface	■	■	■
Local service monitor connector	■	■	■
Wall or ceiling mount	■	■	■
Vandal protection rating			

Options

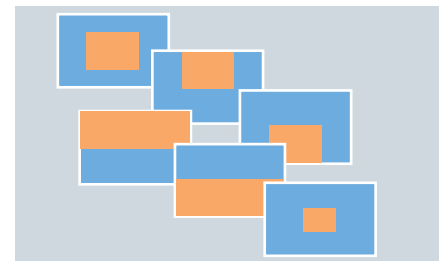
	CFFA-TD	CFFA-CD	CFFA-IC29	CFFA-IC37	CFFA-IC60	CFFA-IC12	CFFA-RS
							
	Tinted bubble	Clear bubble	2,9 mm lens	3,7 mm lens	6 mm lens	12 mm lens	Remote setup kit
CFFC1317	■	■	■	■	■	■	■
CFVS1317	■	■					delivered with product
CFVC1317	■	■					■
CVVS1317							delivered with product
CVVC1317							delivered with product
CVWC1325							■

Vandal-resistant, varifocal		
CVVS1317	CVVC1317	CVWC1325
		
Day/night	Colour	Colour
1/3"	1/3"	1/3" (CMOS, PIXIM)
540	540	500
High	High	High
Auto-iris 3.7 mm ~ 12 mm	Auto-iris 3.7 mm ~ 12 mm	Auto-iris 2.8 mm ~ 10 mm
22.7° ~ 76.9°	22.7° ~ 76.9°	27.4° ~ 100.2°
0.29 Lux (colour)/ 0.21 Lux (mono) 0.53 Lux (colour)/ 0.43 Lux (mono)	0.24 Lux 0.46 Lux	0.6 Lux (F1.3)
■	■	■
PAL	PAL	PAL or NTSC
> 50 dB	> 50 dB	> 50 dB
■	■	■
■		
Mechanical		
■	■	■
Auto / 1/50~1/100,000 s	Auto / 1/50~1/100,000 s	
■	■	■
■	■	■
■	■	RS485
■	■	
■	■	■
IP66, 1000 kg	IP66, 1000 kg	IP66, 1000 kg

CVWC1325 dome offers greater viewing angle.



Software allows programming of six different modes of back light compensation.



CVVA-FMIP	CVVA-CD	CVVA-WMIP	CFVA-BA	CFVA-IP	CVVA-IP
					
Flush mount kit	Clear bubble (vandal-resistant)	Wall mount bracket	Indoor dome base	IP module (fixed dome cameras)	IP module (vandal-resistant dome cameras)
■			■	■	
■			■	■	
■			■	■	
■	■	■			■
■	■	■			■
■	■	■			■

Vandal-resistant models mounting options





The latest vandal-resistant dome camera from Siemens uses Pixim technology

The latest Siemens vandal-resistant dome CVWC1325 uses Pixim®, Inc.'s advanced "Digital Pixel System®" technology (DPS) to offer outstanding performance under extreme lighting conditions. This technology allows each pixel in the image to act as an independent camera. Thereby en-

suring that each pixel receives exactly the right amount of light and enhancing the total image to deliver optimum quality.

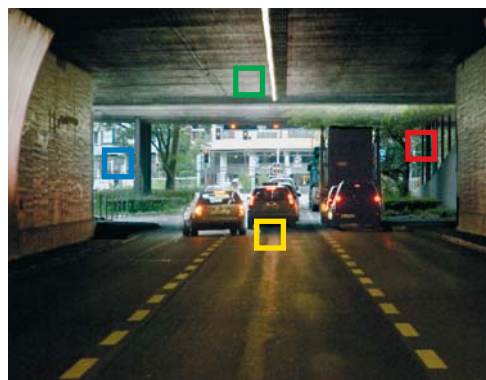
DPS technology also compensates for overexposed and underexposed areas in the image, making it possible for this

camera to produce richly detailed images with a resolution that was previously unattainable. Difficult scenes containing areas of shadow or brightly lit zones can now be monitored with confidence.

Overexposed image with view outside tunnel not clearly visible.



Optimised exposure per pixel using Pixim technology even in areas of shadow or brightly lit zones.



Answers for infrastructure.

■ Megatrends driving the future

The megatrends – demographic change, urbanization, climate change and globalization – are shaping the world today. These have an unprecedented impact on our lives and on vital sectors of our economy.

■ Innovative technologies to answer the toughest questions

Throughout a 160-year history of proven research and engineering talent, with more than 50,000 active patents, Siemens has continuously provided its customers with innovations in the areas of health-care, energy, industry and infrastructure – globally and locally.

■ Increase productivity and efficiency through complete building life cycle management

Building Technologies offers intelligent integrated solutions for industry, commercial and residential buildings and public infrastructure. Over the entire facility's life cycle, our comprehensive and environmentally conscious portfolio of products, systems, solutions and services in the fields of electrical installation technology, building automation, fire safety and electronic security, ensures the:

- optimum comfort and highest energy efficiency in buildings,
- safety and security for people, processes and assets,
- increased business productivity.



Siemens Switzerland Ltd
Industry Sector
Building Technologies Division
International Headquarters
Gubelstrasse 22
6301 Zug
Switzerland
Tel +41 41 724 24 24

Siemens Ltd
Industry Sector
Building Technologies Division
885 Mountain Hwy
Bayswater, VIC, 3153
Australia
Tel +61 3 9721 2000

Siemens Ltd
Industry Sector
Building Technologies Division
Units 1006-10
10/F, China Resources Building
26 Harbour Road
Wanchai
Hong Kong
Tel +852 2870 7888

Siemens Pte Ltd
Industry Sector
Building Technologies Division
The Siemens Center
60 MacPherson Road
348615
Singapore
Tel +65 6490 6000

Siemens PLC
Industry Sector
Building Technologies Division
Brecon House
Llantarnam Park
Cwmbran
NP44 3AB
United Kingdom
Tel +44 871 386 0800

Pixim® and Digital Pixel System® are registered trademarks of Pixim, Inc.

The information in this document contains general descriptions of technical options available, which do not always have to be present in individual cases. The required features should therefore be specified in each individual case at the time of closing the contract.

Subject to change • Order no. A24205-A336-B561 •
© Siemens Switzerland Ltd • Printed in Switzerland • 20812 Ah