

### „Master Piece“

The CONVERS BLADE 173 is designed to be an unobtrusive eye-catcher. It is handcrafted and looks like all of a piece. Anodized Aluminum, brilliant Glass, neat stainless.

With its elegant 8 mm Monitor housing the CONVERS BLADE 173 is a unique gem. The Monitor appears whisper silent - driven by most accurat stepper motors and remote controllable via TCP/IP commands or dry contact. Comfortable.

The CONVERS BLADE 173 is one of a kind. The electronical and mechanical components are state of the art. The entire unit provides both low power consumption and unrivaled durability.

Second to none.  
Made in Germany.  
Made by ELEMENT ONE.

# CONVERS BLADE 173

**ELEMENT ONE**  
**Multimedia GmbH**

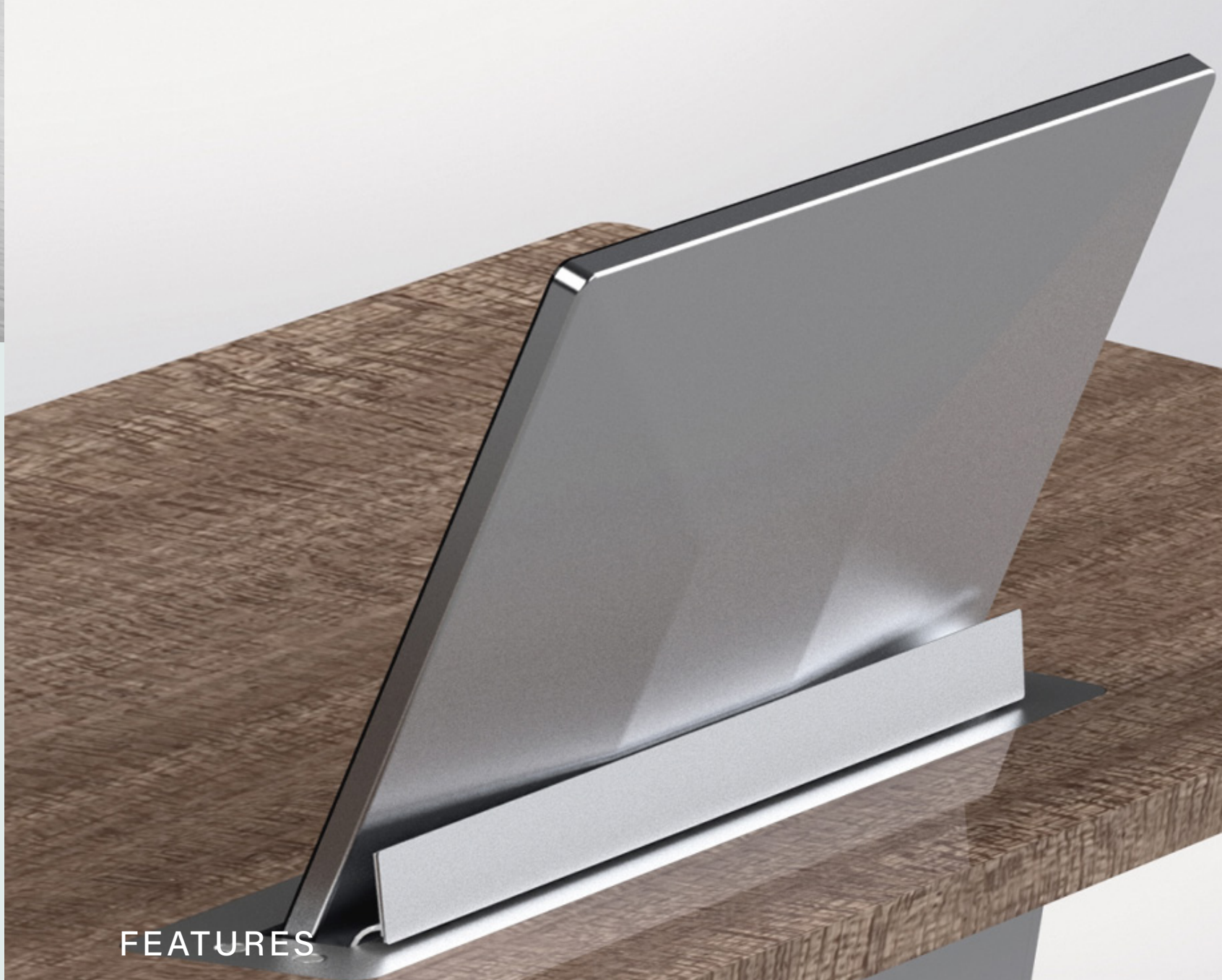
Zum Murgdamm 5  
76456 Kuppenheim  
Germany

Fon: +49 (0) 7222 966 54 20

Mail: [info@element-one.de](mailto:info@element-one.de)  
[www.element-one.de](http://www.element-one.de)



2 mm Anti-reflective safety glass  
UltraLightWeightDesign  
Brushed stainless steel decorative  
frame and closure flap  
Milled aluminum, brushed, silver ano-  
dized Monitor-Housing  
Ultra Thin Monitor Housing 8 mm  
UltraLowNoiseDesign  
UltraLowEnergyDesign  
B-mount System  
Passive Cooling without Ventilation  
Openings  
DirectAxleAccess for manual  
movement  
HDMI HDCP compliant  
FullHD Resolution  
Maintenance free  
5 years limited warranty  
Digital Stepper 12V Motor Technique  
Elektronical Clamping Protection  
German Precision Mechanism  
Electronical & Acustical Diagnose  
System  
Durable HighFlex Cables  
Integrated Universal Mounting Rails  
All-Aluminum Body  
Smart Cable & Connection Location  
Mechanical protection against manual  
misoperation  
EMC + EMV protected  
HydraulicSaveSystem against mecha-  
nical malfunction  
Compact Housing Dimensions



## FEATURES

# CONVERS BLADE 173

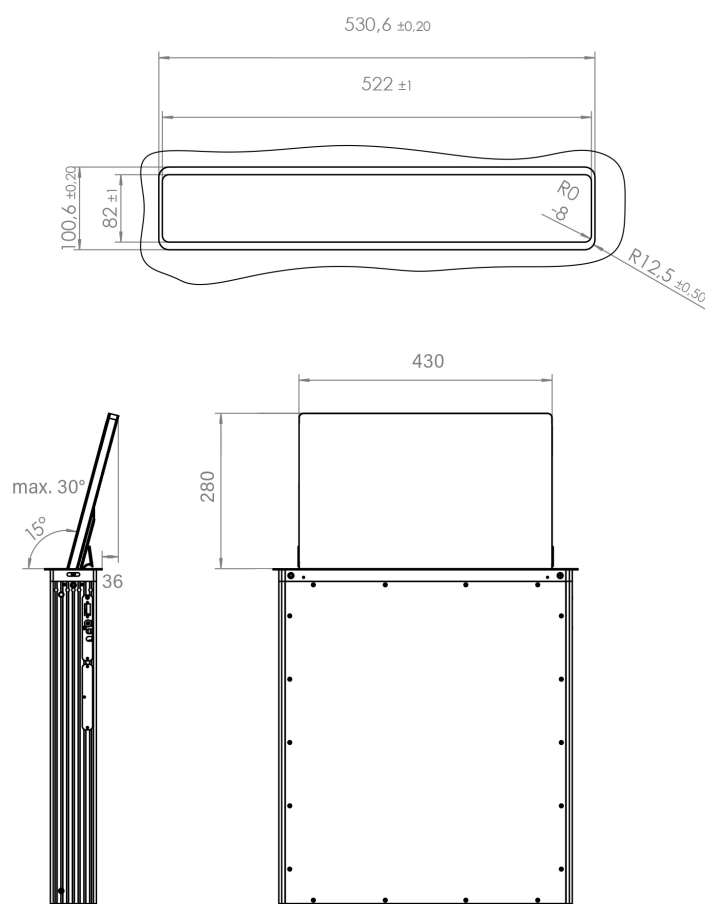


## TECHNICAL DATA

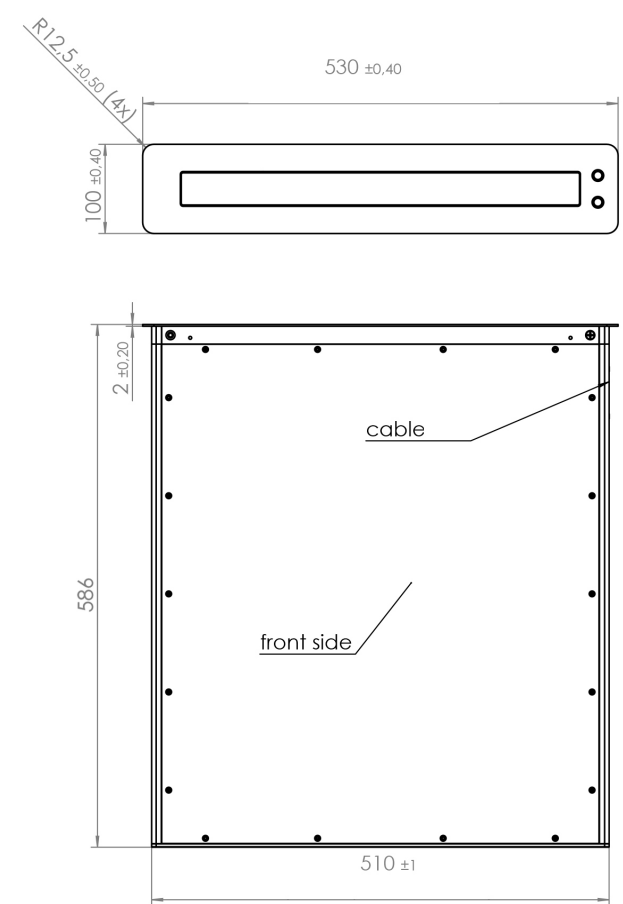
# Product Specification



<b>Art.No.</b>	200-173-T IP BLADE	<b>Screen size:</b>	17.3" (16:9)
<b>Type</b>	CONVERS BLADE 173 FullHD TILT	<b>Resolution:</b>	1920 x 1080 - Full HD, 16.7M colors
<b>Function</b>	Vertically Retractable Monitor with 30° monitor inclination. Furniture integratable 17.3" monitor system with electronical movement mechanism / lifting of the 8mm slim display. Control via buttons on the device or via remote control interface ; Separate electromotive adjustment both pre-adjustable and individually by the user adjustable, programmable tilt angle.	<b>Brightness:</b>	400 cd/m2
<b>Material</b>	Monitor: Milled aluminum, silver anodized, 2 mm anti-reflective glass   Mechanics: Anodized aluminum, stainless steel; Mounting frame and cover flap - Stainless steel, brushed	<b>Contrast:</b>	(typ.) 600:1
		<b>Viewing Angle:</b>	Horizontal 160 ° / vertical 160°
		<b>LED Life:</b>	up to 50,000 hours
		<b>Mass:</b>	~15 kg
		<b>Dimensions:</b>	530 x 100 x 586 mm (LxWxD)
		<b>Power Consumption:</b>	typ. 15 Watts
		<b>P.C. Display:</b>	OFF: 0.12 Watts, Sleep: 0.60 Watts, ON: 19 Watts
		<b>Inclination Angle:</b>	up to 30°
		<b>Dual Stepper Motors:</b>	Display Movement, Tilt-Function
		<b>Video Interface:</b>	1x HDMI, (optional: additional 1x Displayport)
		<b>Remote Interface:</b>	9-pin d-sub serial + RJ45 TCP/IP
		<b>Scope of supply:</b>	Desktop Power Supply - Input: 100-240V AC, 50 / 60Hz. 1.5A; Output: 12V 60W MAX 5.A (Cable length DC ~ 140cm) Power cord 1.5m



PREMIUM RETRACTABLE  
MONITOR SOLUTIONS



# Dimensions

We'd be delighted to offer our expertise in the planning and selection of the right solution for your needs. If required, we can send further technical drawings, detailed photographs, material samples and, of course, demo devices – perfect to handle and try out.

**Simply call us on +49 (0)7222 96654-20**

**Or send us an e-mail at: [info@element-one.de](mailto:info@element-one.de)**

**ELEMENT ONE**

**Multimedia GmbH**

Zum Murgdamm 5

76456 Kuppenheim

Germany

Fon: +49 (0) 7222 966 54 20

Mail: [info@element-one.de](mailto:info@element-one.de)

[www.element-one.de](http://www.element-one.de)