



## *Recreational Vehicle Batteries*



**FLOODED • AGM • GEL**

# MARINE MASTER®

## HEAVY-DUTY DEEP CYCLE • DEEP CYCLE/STARTING

### A Deeper Look Into True Deep Cycle Service HEAVY-DUTY DEEP CYCLE

- More power for electronic accessories
- Built-in protection against deep discharge damage
- Rugged vibration resistant construction
- Reliable power for modest starting



A home away from home has many demanding power drains that can provide a great deal of wear and tear on a heavily used battery. Marine Master has a dependable line of true deep cycle batteries that have been especially made to withstand demanding RV use. Instead of just focusing on one aspect of the battery's design to enhance deep cycle performance, these batteries incorporate multiple features that make it one tough unit.



*Heaviest grid and reinforced, highest-density plate design withstands the demands of continual deep cycle service to provide more accessory power longer.*



*Heavy-duty deep cycle batteries also have special fiberglass mats to improve deep cycling and long-life performance.*

### The Best of Both Worlds DEEP CYCLE/STARTING

- High starting and deep cycle capability
- Longer cycling than starting battery
- Extra reserve power for accessory loads
- Rugged vibration resistant construction

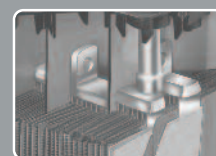
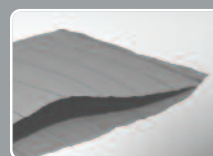
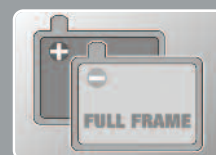


In many instances, one type of power just isn't enough to meet the multiple demands of an RV. Marine Master dual purpose batteries are the ideal compromise between high starting and moderate deep cycle service. Delivering more power-per-pound with reinforced components, they provide significantly longer cycling service than automotive starting batteries, which means more accessory power longer to handle the many creature comforts of an RV.



### MARINE MASTER

*Designed for  
Dependability*



**EXCLUSIVE MOLDED-IN DUAL TERMINALS** provide an easy connection with post or corrosion resistant stainless steel stud.

**OPTIMIZED FULL-FRAME PLATES** better withstand severe service demands and provide maximum current transfer.

**EXTENDED LIFE SYSTEMS** include special separators to prevent life-robbing electrical shorts and protect power producing components.

**FORTIFIED CURRENT CARRYING COMPONENTS** resist vibration and maximize performance throughout the battery's life.

## **INTIMIDATOR® AGM Series for RV STARTING / HEAVY-DUTY DEEP CYCLE**

- Over 2x the cycle life\* withstands demands of heavy house power
- 20x more vibration resistant\* for extensive travel protection
- Best all-purpose service provides starting, cycling, and deep cycle capability
- Safer install and transport with no-spill design to prevent leaking acid
- High freeze-resistance provides better all weather performance
- Better capacity protection during periods of infrequent use

*\*above and beyond conventional designs*

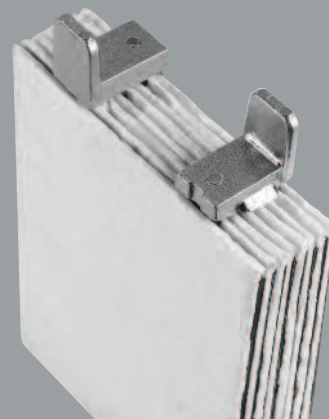
Ordinary batteries can be extremely intimidated by the power demands of today's complex RVs. That's why more RV owners need the premium AGM power of the Intimidator line of batteries. From starting performance to dependable accessory power, Intimidator batteries won't have any trouble in meeting recreational vehicle needs. A premium spillproof design brings essential convenience and safety to the travel enthusiast.

**Intimidator Starting and Cycling Service** batteries deliver high starting and moderate deep cycle power. Ideal for RV owners who want high cranking power and still enjoy dependable power for more electronic accessories.

**Intimidator Heavy-Duty Deep Cycle** batteries deliver a more durable accessory power. Ideal for heavy deep cycle demands with moderate starting power. Provides advanced protection against the typical deep discharge of extended times between recharging.



**INTIMIDATOR**  
AGM Enhanced  
Electrolyte  
Suspension System



**ABSORBED GLASS MAT TECHNOLOGY**

**SHOCK-ABSORBING SEPARATORS** resist vibration and damage.

**ENHANCED DURABILITY DESIGNS** withstand wear of extended cycling service.

**SUPERIOR ELECTROLYTE RETENTION** prevents dry out and acid leaks.

**LOWER CURRENT RESISTANT SEPARATORS** improve current flow for faster starts.

### **DEKA RV BATTERY ACCESSORIES TO MAXIMIZE YOUR ELECTRICAL EFFICIENCY...DEKA DELIVERS**

High quality battery accessory and wire products are a critical part of your RV's electrical system performance. For more information, contact East Penn.





## **DOMINATOR® GEL Series for RV**

### **EXTREME DEEP CYCLE/STARTING**

- Longest deep cycle life
- Ultimate performance for heavy house power
- Superior protection against vibration and deep cycle damage
- Better capacity protection during periods of infrequent use
- Safer install and transport with no-spill design to prevent leaking acid
- Dependable starting performance



Dominator's unique gelled electrolyte technology offers some of the deepest cycling batteries in the RV industry. Our Gel design is built to withstand the grueling service of heavy house power or extended times between recharging. These evolutionary maintenance-free batteries deliver dependable performance cycle after cycle while providing longer battery life, even under the toughest RV conditions. Their spillproof design and minimized gassing makes them safe to use on or around sensitive electronic equipment.



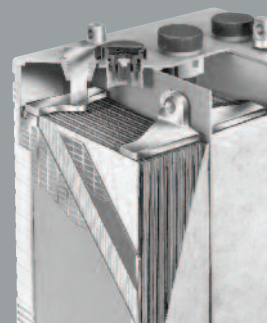
It's not always blue skies  
and open roads.

Be ready.



### **DOMINATOR**

Extreme  
Performance Gel



#### **INNOVATIVE GEL TECHNOLOGY**

**THICK, SHOCK-ABSORBING GEL AND HIGH DENSITY PLATES** provide superior resistance to vibration and damage.

**GELLED ELECTROLYTE CONSISTENCY** prevents ultra-deep discharge damage from a uniform acid gravity.

**SOLID GEL STATE** won't leak or spill like liquid electrolyte.

**REINFORCED FIBERGLASS MAT AND EXCLUSIVE TANK-FORMED PLATES** prevent shorts and enhance electrical performance.

## **EAST PENN manufacturing co., inc.**

Lyon Station, PA 19536-0147 • Phone: 610-682-6361 • Fax: 610-682-4781

**Order Department Hotline: 610-682-4231**

[www.dekabatteries.com](http://www.dekabatteries.com)

**A<sup>3</sup>™ (Advanced-Cubed)**

precision-focused  
manufacturing approach  
delivers an optimal balance  
of life, power, and durability.

Each function of the battery is thoroughly tested to ensure  
that every battery delivers optimized performance.

