

User Manual

Sistemi per
il recupero



Recovery
systems



Made in Italy

www.pmemare.com



Dear user, thank you for purchasing this product designed and manufactured entirely in Italy.

GO!UP is the first patented self-submerging buoy designed specifically for sport and professional fishing. It is accompanied with or replaces the classic buoy used for the recovery of lobster traps, fishing nets, lobs, etc. No longer visible, but protected under the surface of the water, it avoids any sabotage, theft or deterioration of your fishing gear. It re-emerges on the surface thanks to a special control and does not require any installation in the boat. It covers all needs, being fully programmable.

TECHNICAL SPECIFICATIONS	Page 1	FUNCTIONS SETTING	Page 3	MAINTENANCE	Page 6
PACKAGE CONTENTS	Page 1	PRELIMINARY TEST	Page 4	RESTRICTIONS OF USE	Page 7
WARNINGS	Page 2	WAY OF USE	Page 5	DISPOSAL	Page 7
FIRST IGNITION	Page 2	DIAGNOSTICS	Page 6	WARRANTY	Page 7

GO!UP NEO TECHNICAL SPECIFICATIONS	
CABLE LENGTH	20 METERS
REWIND CABLE	AUTOMATIC
CABLE BREAKING LOAD	> 500Kg
MAX TOLERABLE DEPTH	15 METERS
AUTONOMY AT -3 METERS	> 15 DAYS (NOTE 1)
AUTONOMY AT -9 MÈTRES	> 10 DAYS
AUTOMATIC LEVELING	PROGRAMMABLE
DEPTH LEVELING THRESHOLDS	3/6/9 METERS
CHARGING SYSTEM	SOLAR CHARGE
NIGHT DETECTION	HIGH POWER LED
CALLING SYSTEM	ULTRA/COD. 200KHz
PORTÉE DU SIGNAL	> 50 M (100 M AVEC STICK)
NUMBER OF CONTROLLABLE BUOYS	UNLIMITED
WEIGHT	1,3 Kg
DIRECTIONAL STICK FOR TX US	OPTIONAL
CLIP TO THE RAIL	OPTIONAL

GO!UP is an electronic buoy able to receive a code by remote sent by its corresponding module. When it receives the code, it releases the cable it contains and reappears on the surface. The cable rewinds automatically after use and the device turns off automatically.

The call module does not require any installation on the boat, its use is extremely simple and effective: immerse the transducer in the useful range, feed the module through the 12Volt socket and press the call button. GO!UP will reappear where it has been submerged and it can be retrieved with the equipment.

NOTE 1 =>Indicative time may vary depending on the clarity of the water and the season light (summer and winter)

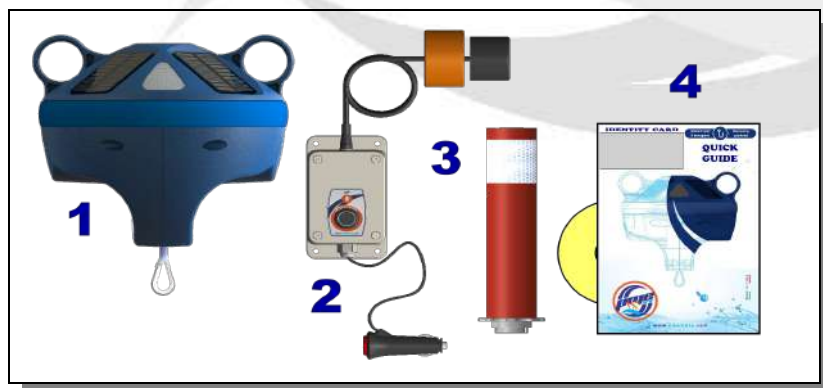
GO!UP uses a coded and unambiguous transmission system that allows the buoy to go up when called, it has a microprocessor that allows you to control its peripherals, including:

PRESSURE SENSOR: it detects the depth of the bottom and adjusts the immersion of the buoy accordingly.

MOTION SENSOR: detects motion to enter power saving mode when GO!UP is not used.

WATER SENSOR: for automatic switching off of the buoy at the end of use

PACKAGE CONTENTS



- 1 BUOY
- 2 TRANSMISSION MODULE
- 3 VISUAL INDICATOR
- 4 QUICK GUIDE + CD

WARNINGS



ALWAYS CHARGE THE BATTERY BEFORE USING GO!UP, EXPOSING THE DEVICE TO THE SUN, TO HAVE THE MAXIMUM AUTONOMY OF IMMERSION.

GO!UP is equipped with a lithium ion battery with very low self-discharge. It uses only solar energy to recharge: when exposed to the sun, it can be recharged autonomously thanks to its solar cells. 16 hours of sun are enough to recharge the battery if it is completely empty. Average charging time with a fully discharged battery taking into account average daily insolation of 1000 W / Mq.

GO!UP is programmed to operate between -1.5 meters and -12 meters below the water level; the pressure sensor detects how deep it is submerged. Use an extension rope suitable for joining your fishing tackle with GO!UP buoy. When used on incompatible seabed (> 12 meters), GO!UP will immediately reach the surface. More details in the section WAY OF USE (page 5)



GO!UP ENTER PROTECTION MODE IF THE DEPTH IS > -15 METERS AT THE END OF THE TOTAL CABLE UNWIND (20 METERS). THIS SITUATION OCCURS IF YOU CONNECT GO!UP AND YOU MAKE IT SINK AT A DEPTH OVER -35 METERS

In case of temporary exceeding of the maximum depth of -12 meters, GO!UP immediately releases the cable and reappears on the surface while avoiding overpressure. If GO!UP is still deeper than -15 meters at the end of the total cable run (20 meters), it goes into protection and its operation is disabled. When turned back on, it emits a RED and acoustic signal indicating that it is OFF (PAGE 6). In this case, the validity of the guarantee is automatically canceled.

THE DEVICE MUST BE DELIVERED TO THE SERVICE CENTER FOR OPERATIONAL VERIFICATION AND RESTORATION.



ALWAYS RECOVER FISHING EQUIPMENT DIRECTLY THROUGH GO!UP'S ROPE AND NEVER BY THE BUOY TO NOT DAMAGES THE INTERNAL MECHANISMS.

The manufacturer declines all liability and will void the warranty for damage to the device caused by: contact with the propellers, stern feet, any other body; excessive load on the automatic rewinding cable or over its limit switch, may compromise internal mechanisms. In the event of falls or accidental knocks, carefully check that there are no cracks or fractures on the surface. If in doubt, ask the service center for assistance and never immerse the device into the water for any reason, in order to avoid further compromising its operation. All repairs must be carried out at the PME Mare Service Center via your local dealer.



DO NOT EXPOSE THE CALL MODULE TO BAD WEATHER CONDITIONS OR IN CONTACT WITH WATER SKETCHES; WHEN UNUSED, REMOVE THE PIN OF THE TRANSDUCER CABLE AND CLOSE THE PLUG WITH THE CAP, IN ORDER TO PROTECT THE DEVICE FROM HUMIDITY

FIRST SWITCHING ON - SWITCHING ON PROCEDURE



RECHARGE THE BATTERY BEFORE INITIAL SWITCHING ON, PLACING THE DEVICE AT THE SUN FOR AT LEAST 8 HOURS.

FIRST SWITCHING ON OF GO!UP

The first ignition takes place only by immersing GO!UP in the water; after partially recharging the buoy in the sun for at least 8 hours, immerse it in the water. GO!UP switches on, emitting a flashing white light. Remove GO!UP from the water and place it on the floor; after 2 minutes, it will go off by emitting a bright and acoustic BLUE signal for 2 ".

Then, to check the charge level of GO!UP's battery, proceed as follows
SWITCHING ON PROCEDURE (with the buoy off):

- (1) Turn the buoy for 2 "
- (2) Bring the buoy vertically

GO!UP in this position will be activated and will emit acoustic and luminous signals (corresponding to the charge level of the battery), followed by a continuous white light signal with a duration of 10 ": during this time, you can SET UP the functions of GO!UP (page 3) A subsequent WHITE blinking highlights the ignition status. After 2 minutes of inactivity, it will turn off by emitting an acoustic and luminous BLUE signal during 2 ".



FUNCTIONS SETTING



GO! UP can be customized according to the needs of the fisherman:

OPERATING DEPTH

It is possible to choose the working depth of the buoy after coupling it to your fishing gear and submerged in the water; the operating depth can be set to: -3 meters -6 meters (factory setting) -9 meters. GO! UP self-levels (once) to the operating depth after being immersed.

LOW BATTERY MANAGEMENT

You can choose what GO!UP should do if it were with the low battery under the water (<20%): go up to the surface (in night conditions it emits a white flash) or stay at the chosen depth, automatic level at -3 meters (factory setting) . This possibility allows GO!UP to be recharged and increases its autonomy during the dive



PAY ATTENTION TO THE TIDE LEVEL PRESENT IN YOUR FISHING AREA AND SET THE OPERATING DEPTH AND LOW BATTERY MANAGEMENT BASED ON IT.

CALCULATION OF THE TIDE: If in the place where you use GO! UP there are tides with gradients lower or equal to 1 meter you can safely use any set up. With tides higher than 1 meter it is recommended to use the set-up at -6 meters without partial surfacing with low battery (SETUP 4,6). If the tide has differences in height up to 3/4 meters, set-up is recommended at -9 meters without partial surfacing when the battery is low (SETUP 1,3). With tides over 4 meters, it is advisable to sink the buoy in the transition phase between high and low tide or vice versa.

ADD MORE GO!UP

All additional buoys separately purchased are delivered without transmission code in factory configuration. Automatic learning of the transmission code takes place simultaneously with the setting procedure described below. Once the transmission code has been learned, GO!UP can only be called with its own module. To increase security, it will no longer be possible to modify the code, but only to configure the functions.

FUNCTIONS SETTING PROCEDURE AND AUTOMATIC LEARNING OF THE CODE

The functions are programmed as follows:

Make sure you have the buoy handy, with the battery charged, and a power outlet suitable for the module; do not power the transmission module.

1) Open the reminder module using the 4 screws on the front of the box. Inside, you will find 4 switches and a button.

Be careful not to damage the wires connected to the button. (Fig. 1)

2) Set the switches D1-D2-D3-D4: to obtain the desired setting, refer to the following table:

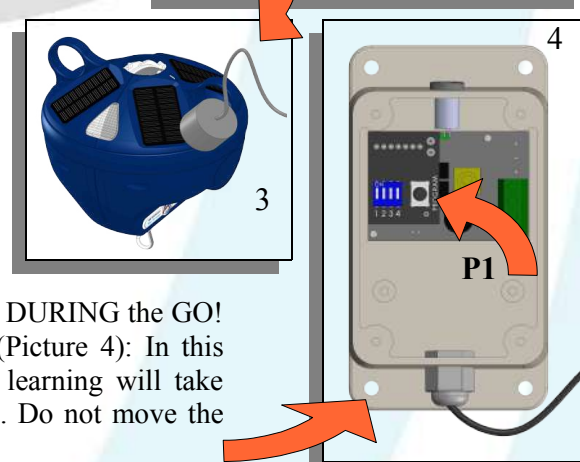
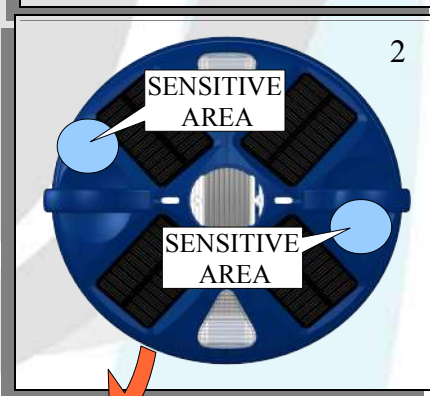
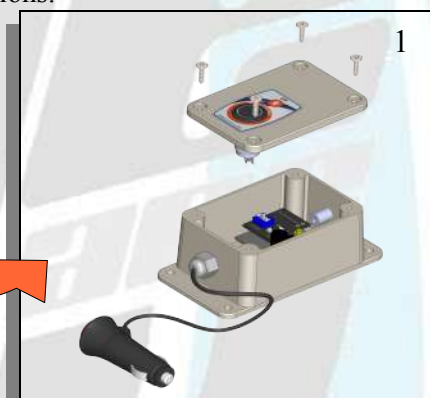
	D1	D2	D3	D4	FUNCTION SETUP - DESCRIPTION
1	ON	ON	ON	ON	SELF-LEVELING AT -9 METERS TOTAL RESURFACING AT BATTERY END
2	ON	ON	ON	OFF	SELF-LEVELING AT -9 METERS - 3 METERS RESURFACING AT BATTERY END
3	ON	ON	OFF	ON	SELF-LEVELING AT -9 METERS WITHOUT RESURFACING AT BATTERY END
4	ON	ON	OFF	OFF	SELF-LEVELING AT -6 METERS TOTAL RESURFACING AT BATTERY END
5	ON	OFF	ON	ON	SELF-LEVELING AT -6 METERS - 3 METERS RESURFACING AT BATTERY END
6	ON	OFF	ON	OFF	SELF-LEVELING AT -6 METERS WITHOUT RESURFACING AT BATTERY END
7	ON	OFF	OFF	ON	SELF-LEVELING AT -3 METERS WITHOUT RESURFACING AT BATTERY END
8	ON	OFF	OFF	OFF	SELF-LEVELING AT -3 METERS TOTAL RESURFACING AT BATTERY END

3) Power the module through the 12 Volt socket;

4) Turn GO!UP upside down and turn it vertically.

5) Wait until the end of the battery test and the CONTINUOUS WHITE light signal.

6) Place the transducer in the indicated position (Picture 2.3), and DURING the GO! UP continuous light signal, press the P1 button and release it (Picture 4): In this phase of a few seconds, the configuration and automatic code learning will take place, as well as the emission of certain light and sound signals. Do not move the transducer away during this operation.



If the operation succeeds, at the end of the configuration, GO!UP will emit a BLUE signal with a duration of 2 ", and then turn off. If the operation fails, it will emit a RED light signal of a duration 2 ", then turn off; in this case, repeat the operation from POINT 4.



7) Turn off and close the module; pay attention to the seal of the case, it must remain in its seat. If, after pressing the P1 button, no programming is done and the buoy starts to emit a flashing white light, the transducer has not been correctly positioned. Wait until GO!UP turns off and repeat from POINT 4.

PRELIMINARY TEST



IF THE BATTERY LEVEL IS TOO LOW (<5%), THE BUOY WILL NOT SWITCH ON.

If you do not know the charge level of GO!UP buoy battery, do not immerse it, but follow the procedure on page 3 (First GO!UP switching on). If the battery level is <5%, GO!UP does not switch on. If the level is <30%, it lights up with a RED light and goes out. If immersed in this state, it immediately opens the brake, freeing the cable and prohibiting its use. Always fully charge GO!UP before use.



IMMERSION TIME	
100% => 10 DAYS	4 BEEP
80% => 8 DAYS	3 BEEP
60% => 6 DAYS	2 BEEP
40% => 4 DAYS	1 BEEP
30% => RECHARGE	LONG BEEP

GO!UP has an autonomy of up to 10 days at full depth, at a working depth of -9 meters. Immersed at an operating depth set at -3 meters, its range further increases according to the clarity of the water and the light period (summer / winter), because at this depth a modest recharge of the battery can occur .



ALWAYS TEST GO!UP BEFORE FIRST USE, AFTER A FUNCTIONS SETTING OR AFTER SELF-LEARNING OF THE ADDITIONAL BUOY CODE BEFORE USING AT SEA

TEST OF THE CALL MODULE AND CORRECT SELF-LEARNING OF THE CODE

Use the following procedure to test the call module and correct code coupling:



Turn the buoy on as follows:

(1) reverse the buoy for at least 2 "; (2) bring the buoy vertically;

GO!UP, in this position, activates in 2 "and emits acoustic and luminous signals (corresponding to the battery charge level), wait for the next WHITE flashing light.

Turn the call module on , place the US transducer in the sensitive area (picture.1 / picture.2 page.3) and, during GO!UP FLASHING, press the call button for more than 2 ".



PRESS THE CALL BUTTON FOR AT LEAST 2 "TO SEND THE CODE.

GO!UP responds with a series of beeps each time the code, sent by the associated call module, is received.

GO!UP'S TEST INTO THE WATER: AUTO-LEVELING AND CALL MODULE CODE RECEIVING

1) Connect the end of the self-winding GO!UP cable to a weight of at least 1.5 kg and connect a long enough safety rope to the eyelet of the buoy, this rope will be used to check the self- leveling.

2) Switch on GO!UP and immerse it between -10 and -12 m from the surface, **driving it into the water by the cable and not directly by the buoy (Figure 2) to avoid DAMAGES to the internal mechanisms.** GO!UP lights up in contact with water and the weight brings it close to the seabed. Now you can check the automatic leveling that occurs about 10" after GO!UP touches the sea floor.

3) Power the call module using a 12-volt plug and immerse the transducer in the water.

4) Press the call button for more than 2 seconds. The call button will begin to flash, confirming that the code has been sent. The buoy reappears on the surface, emitting a WHITE / BLUE light signal, releasing the cable it contains. The sliding of the cable ends after 2 ' of its recovery, in order to allow an easy recovery, and GO!UP turns off by emitting a BLUE light signal for 2 ".



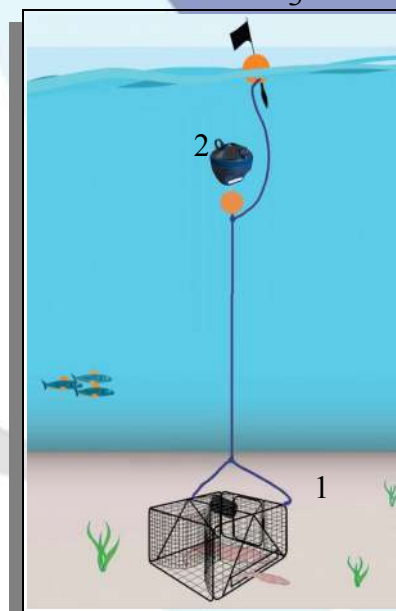
USE, BASIC RULES

GO!UP was born as a product to be added to fishing equipment, provided with classic floating indicators. This device, duly connected to the terminal part of the fishing equipment, between -2 and -10 meters from the surface, allows to recover the equipment even if the floating detector is removed, cut or sunk.



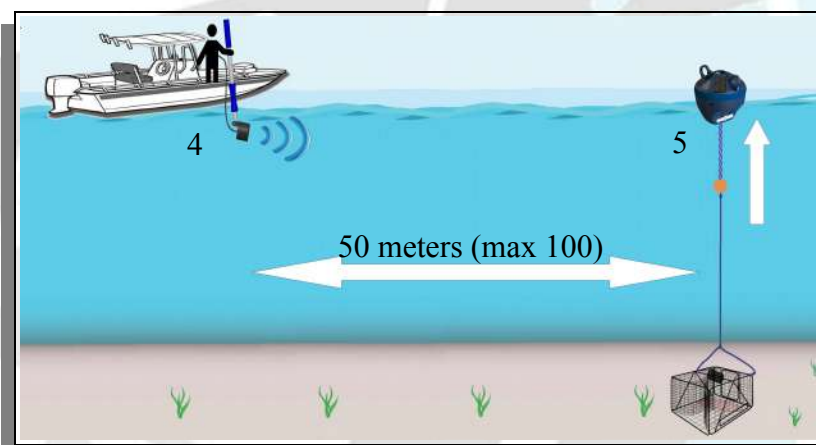
WHEN GO!UP IS ON, THE ROPE IS BLOCKED INSIDE THE BUOY: NEVER FORCE THE ROPE OUT. BECAUSE IT MAY CAUSE DAMAGE TO THE LOCKING SYSTEM

Connect GO!UP to the terminal part of the fishing equipment: a typical example may be the fish trap (1) working on a sea bed of -50 meters. Connect the trap with a rope of adequate length, flush the trap with an adequate weight. When the trap reaches the bottom, make it back up by counting 8 arm strokes (about 10 meters) and connect a large float (2) that keeps the cable upright, even with the sea currents, and at the same time by connecting GO!UP. Switch on GO!UP and immerse it **into the water by driving it from the cable and not directly by the buoy (PAG4, FIG.1) in order to avoid DAMAGES the internal mechanisms.** At the end, connect the floating indicator (3). It is advisable to use a small diameter connection cable to avoid friction that could move fishing equipment in the case of currents.

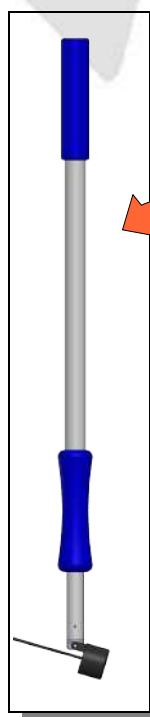


THE WEIGHT OF THE JUNCTION CABLE BETWEEN THE FISHING EQUIPMENT AND GO!UP MUST NOT FORCE THE BUOY FLOATABILITY. ALWAYS USE STRONG AND LIGHTWEIGHT CABLES WITH REDUCED SECTION, ADEQUATE WEIGHT, AND A FLOAT TO KEEP TENSED THE CABLE.

Take the GPS point and let the equipment work. Return close to the GPS point (<50 meters) and if the floating indicator (3) has disappeared, immerse the transducer in the water **in direction of GO!UP (4)**, turn on the call module and press the button for more than 2 "GO!UP will come up to the surface at the vertical of your equipment (1) It is now possible to recover GO!UP and the fishing equipment ALWAYS recover them by the cable (5) and NEVER by the buoy to avoid damaging internal mechanisms (PAGE 4, FIG.1)



GO!UP's ACCESSORIES



DIRECTIONAL ROD

To increase the range of the call module, the directional rod is available as an accessory, it allows to better direct the transducer to GO!UP, at a range of about 100 meters.



HMPE CABLE

HMPE cable extremely resistant to breaking (> 400 kg), very light and thin (diameter of 2 mm), is available as an accessory to reduce friction with water and allow the use of small floats.



CLIP TO THE RAIL

To let an efficient solar charging of GO!UP on your boat, a convenient clip to the rail, to hang in place of the visual indicator, is available as an accessory

DIAGNOSTICS



GO!UP uses the following acoustic and light signals for the diagnostics:

AUTONOMY INDICATION	COLOUR	CODE
100% AUTONOMY 10 DAYS OF IMMERSION	WHITE	4 FLASHES+4 BEEPS
80% AUTONOMY 8 DAYS OF IMMERSION	WHITE	3 FLASHES+3 BEEPS
60% AUTONOMY 6 DAYS OF IMMERSION	WHITE	2 FLASHES+2 BEEPS
40% AUTONOMY 4 DAYS OF IMMERSION	WHITE	1 FLASH+1 BEEP
< 30% LOW BATTERY	RED	5" + LONG BEEP
RESURFACING	WHITE/BLUE	DURATION 120"
SHUT DOWN	BLUE	DURATION 2"
OPERATIONAL – WAITING FOR SETUP	CONTINUOUS WHITE	DURATION 10"
OPERATIONAL – WAITING FOR ENTRY INTO THE WATER	WHITE	FLASHING
ERRORS	COLOUR	CODE
1 PRESSURE SENDOR	WHITE/RED	DURATION 5"
2 INSUFFICIENT DEPTH (<1.5m)	BLUE	CONTINUOUS
3 MAX. DEPTH EXCEEDED (>15m)	RED	FLASHING 60"
4 RESET CABLE RELEASE UNIT	RED	DURATION 10"

ERROR REPORTING AND PROBLEM SOLVING

1 => Error indicating that the pressure sensor has not been calibrated (it happens at the ignition after the indication of the battery charge level). After this error, the buoy turns off. Repeat the ignition operation. If the error persists, contact the service center.

2 => Error indicating a minimum depth of the seabed less than -1.5 meters. Use the buoy at greater depths.

3 => Error indicating the maximum depth of the seabed has been exceeded, greater than -15 meters (PAGE 2). If the buoy exceeds this depth, it goes into protection. Contact the service center.

4 => Error indicating the need to reset the cable release unit or water inlet inside the buoy (it happens on ignition after the indication of the battery charge level or at the shut down).

RESET THE ROPE RELEASE UNIT

If GO!UP releases the cable when it is off, perform the reset: turn on the buoy, do not submerge it, and wait until the cable release unit is properly reset; GO!UP automatically tries to reset the cable release system by emitting a continuous WHITE flash at the end. If the operation fails, the buoy turns off by emitting a RED light signal. In this case, do not use the buoy and contact the service center as soon as possible. This error can also occur as a result of an accident that can cause water infiltration.

GO!UP IS CALLED BUT IT DOES NOT RESURFACE: THE CAUSE AND RESOLUTION

GO!UP don't re-emerge (don't receive the code)	=> Reduce the distance between the call module and GO!UP
GO!UP don't re-emerge (don't receive the code)	=> Direct the transducer to GPS point (GO!UP)
GO!UP does not turn on	=> Charge GO!UP before using it again
GO!UP does not dive, stays afloat	=> Switch on GO!UP / Reset the cable release system
GO!UP reappears immediately after the dive	=> Depth> -12m: extend the cable!!!
GO!UP reappears immediately but not completely	=> Depth> -20m: CAUTION !
GO!UP lights up, emits a RED signal, goes off	=> Low Battery / Diving> -15m / Infiltration
Call module off	=> Check 12 Volt / Power the call Module
Call module does not transmit (LED off)	=> Check / replace the fuse inside the 12Volt socket
Call module does not transmit (flashing LED)	=> Detached transducer socket or non-submerged transducer
LED of the call module flashes constantly	=> Overheat protection, wait

MAINTENANCE

GO!UP does not contain any components that may wear out. Do not clean the device with harsh chemicals and degreasers. Rinse GO!UP with plenty of fresh water after each use. Keep the solar cells clean for better charging of the battery. Dry the buoy before storing it inside the boat. Contact your dealer in case of failure. Do not intervene on the device for any reason.

RESTRICTIONS OF USE



Check the laws in the country of use of the product that may prevent the use of underwater objects. Pme Mare declines all responsibility for any unauthorized use or different from the destination for which it was designed.

DEPTH OF THE SEA BED:

The depth of the sea bed must be between -1.5 meters and -12 meters. Lower depths will prevent the use of GO!UP buoy, greater depths require sufficient extension to be interposed between the self-winding cable and the fishing gear. Pay attention to the tide level in your area and adjust the depth of use based on it. Extra pressure damage caused by incorrect configuration or use of the device is not covered by the warranty.

IMPORTANT



FIRST USE

IF THE PRODUCT IS AN ADDITIONAL GO!UP SEPARATELY PURCHASED MAKE THE SETUP BEFORE USING IT! (User manual PAG.3)

EXECUTE THE FIRST IGNITION ONLY AFTER THE BUOY HAS BEEN CHARGED!

Expose your GO!UP buoy for at least 8 hours in direct sunlight to partially charge the battery.

WEIGHT TO SINK FISHING EQUIPMENT:

Always use proper weights, small section cables with high tensile strength and floats that prevent fluctuation caused by ocean currents. (User manual PAGE 5). Pay special attention to this.

DISPOSAL AND ENVIRONMENTAL PROTECTION

At the end of the useful life of the device, disposal must be performed in compliance with national and / or regional legislation, taking into account the recycling possibility of any components or materials .

The unit contains a rechargeable lithium polymer battery. The device must be properly disposed as an electronic device



CAUTION: ELECTRICAL AND ELECTRONIC EQUIPMENT WASTE SHOULD BE ACCORDING TO THE PROVISIONS OF EU DIRECTIVE 2012/19/UE (RAEE)

WARRANTY

The general warranty becomes void if the product is improperly used , in not compliant purpose for which it was built. The warranty becomes void if the product is improperly maintained , damaged, opened and if different from intended uses operations are carried out .Any parts altered or modified by unauthorized persons are excluded from the warranty conditions and possible consequent damage to persons or things can nowise be attributed to the manufacturer . In case of use contrary to the instructions , any damages arising from other purposes use , tampering or failure to follow instructions , the manufacturer accepts any responsibility and is not authorized to apply the terms of guarantee.

The purchase of your product is protected by the rules and guarantees in your country. The seller guarantees the product for the period of law from the date of sale and guarantees the smooth operation of the product and the good quality of the materials. During the warranty period, the seller agrees to provide for the repair or replacement free-based seller of defective parts or construction defect, provided that these parts are delivered, at the express written request of the seller, the seller's premises the same carriage. The warranty deficiencies and failures resulting from misuse of the product, improper maintenance, modifications made without the agreement of Seller, normal wear and tear, malfunctions due to a realization does not comply with the installation instructions provided in the user manual. Also they excluded from the guarantee breakage caused by pressure operation above the maximum operating indicated in the user manual. All transport charges for returning the defective goods are held by the buyer. Batteries when included are excluded from the guarantee.