

## CANEMU CAN filter connection manual for BMW CAS4

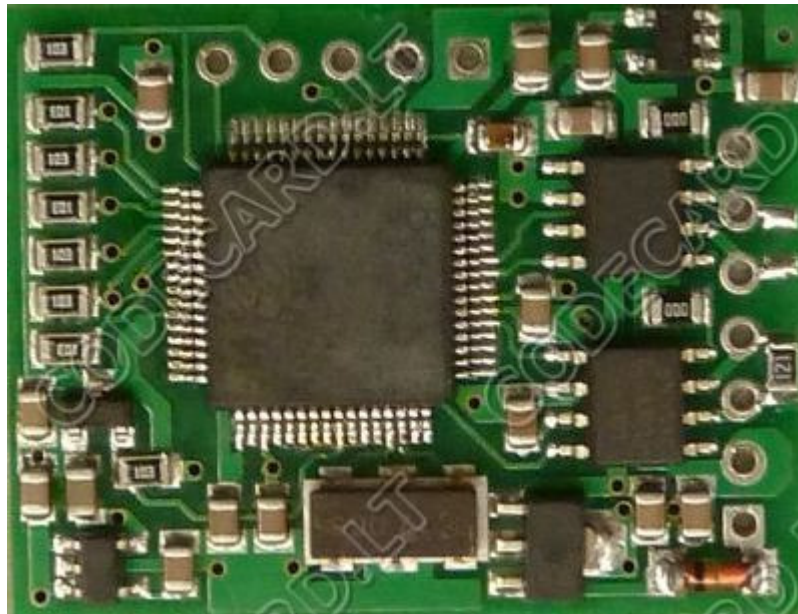
### 1. BMW CAS4 installation instructions

**CANEMU is tested on F01, F02 with 1L15Y processor, F10 and F07 (BMW GT) with 1L15Y and 5M48H processors and on F25 ( new X3). After CANEMU instalation diagnostic tester (BMW ICOM or INPA) shows in CAS4 the same mileage as on instrument cluster.**

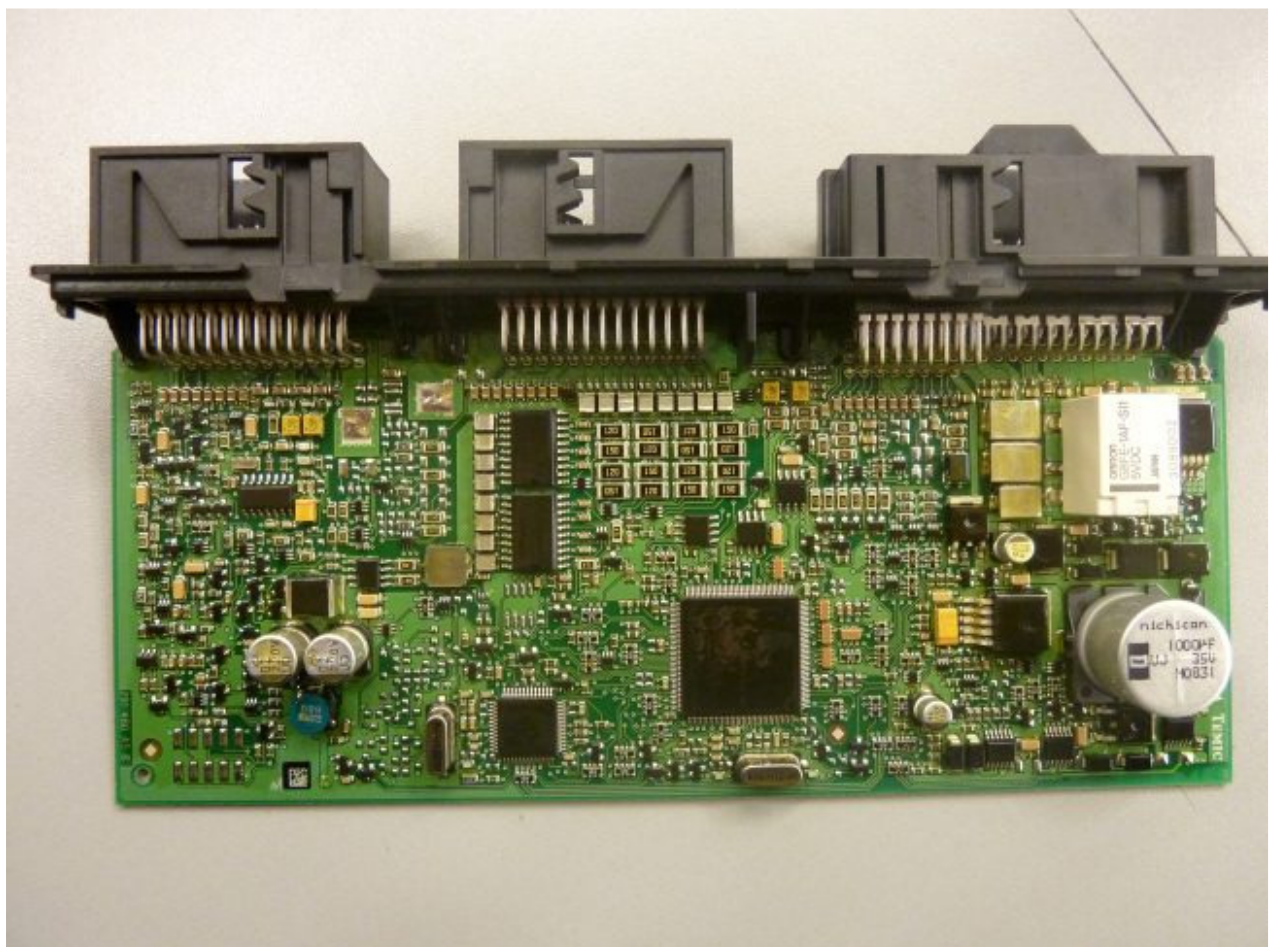
Remove CAS4 from car. No need to disconnect batery, just let car for 1 minute, car go to sleep mode and now you can disonect CAS4.

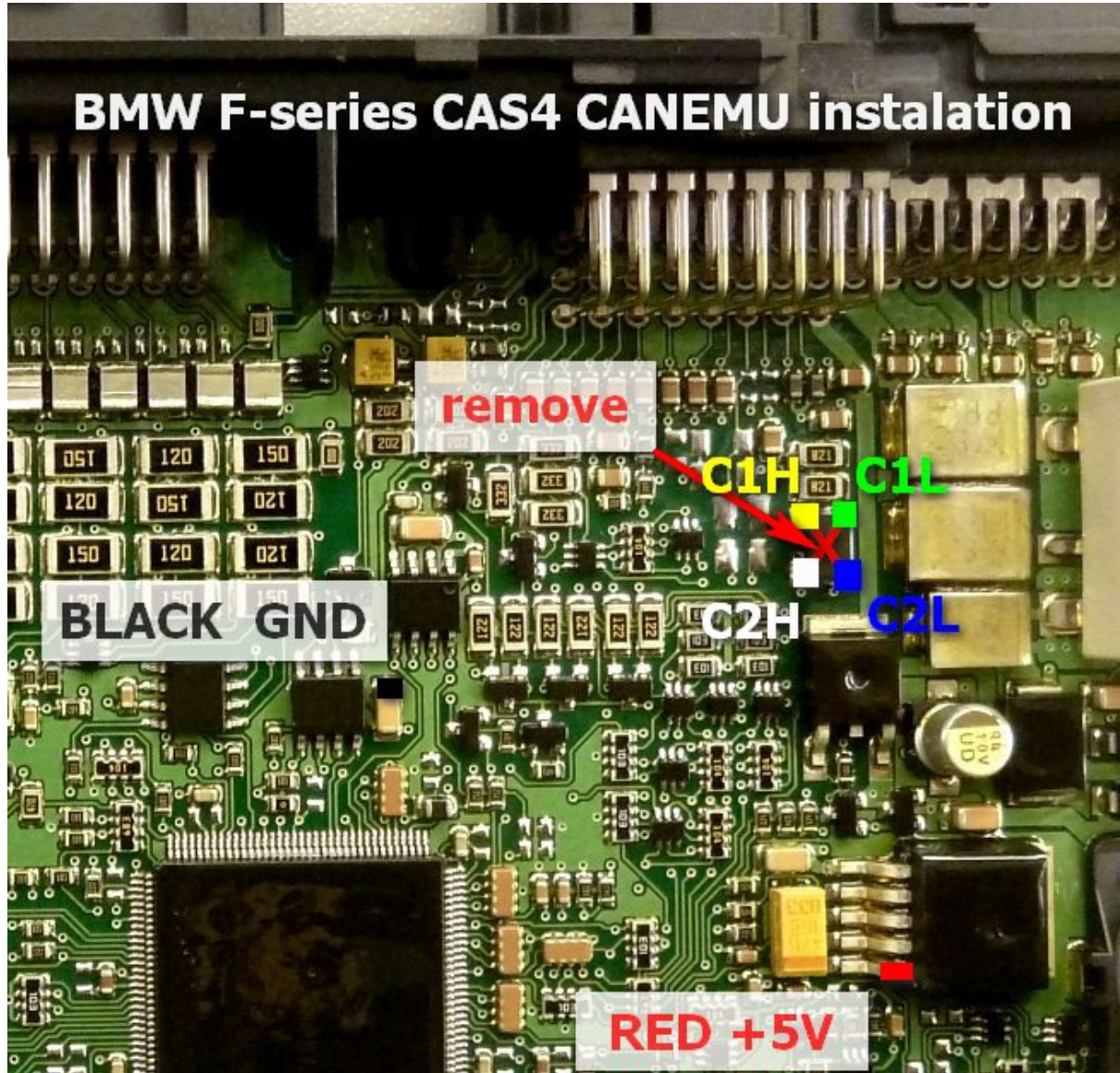
- For first prepare **CANEMU** board: solder 1 and 3 configuration points – look picture. Use fine KYNAR wire for installation.

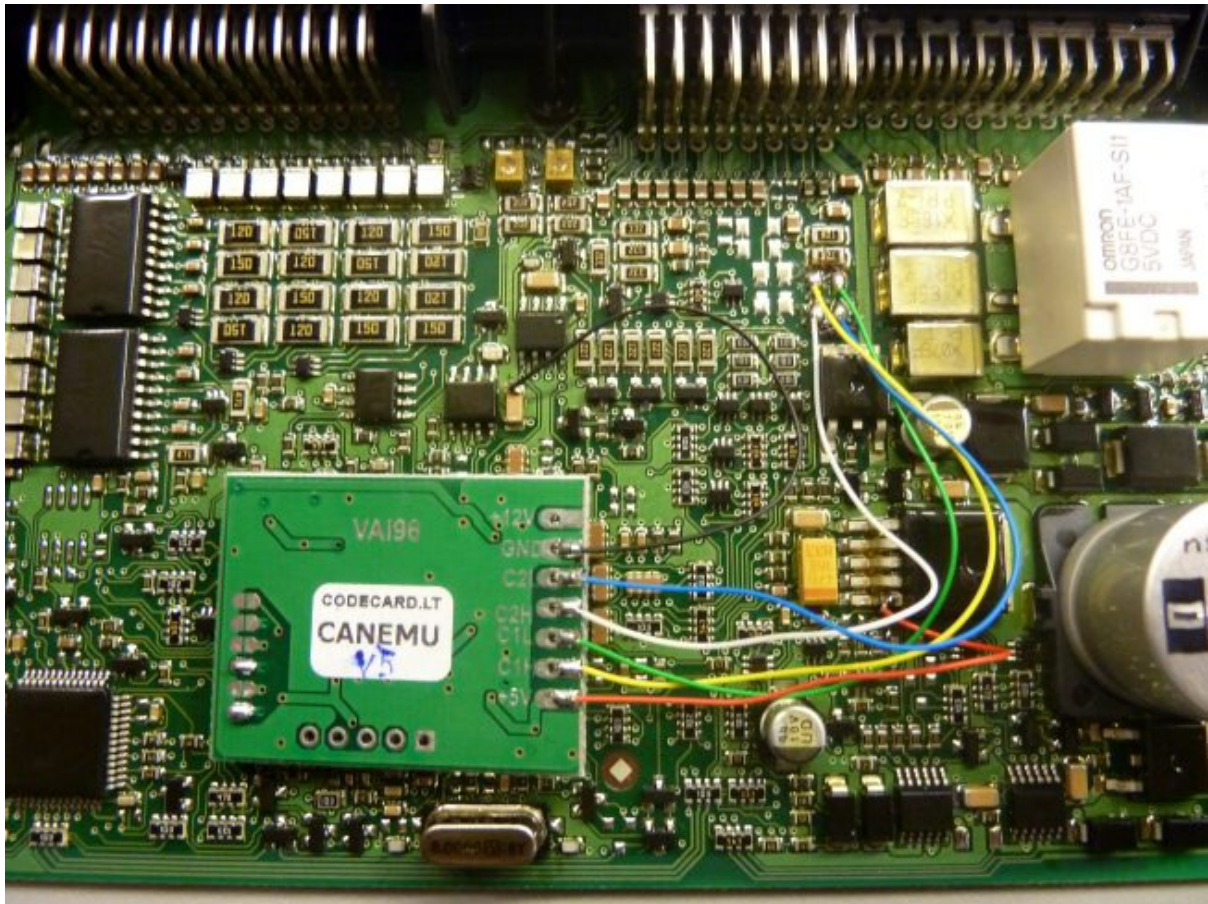




Open CAS4. Install CANEMU board like in picture:







Now install CAS4 back to the car. Switch ignition and check car – everything must be like before CANEMU instalation.

Remove instrument cluster and change mileage in 160DQWQ EEPROM.

**For all car electronic system fault memory erase use [BMW F-series fault codes eraser](#)**