

# EuroCompleta LED

## LED Emergency

Emergency lighting device with innovative optical system that offers a good distribution of the light beam. Possibility to set the unit in SE or SA configuration and select the 1h or 3h autonomy by simply cutting a wire on the electronic board. It consists of a large functional wiring compartment for accommodating 2.5mm conductors and predisposed for wiring through.

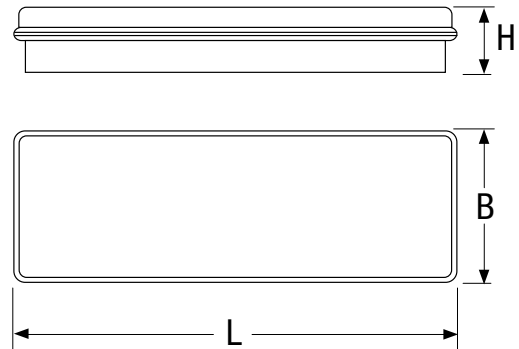
Available in IP42 and IP65 versions Wall and ceiling installation and recessed. Prepared for installation with Ø16 and Ø20 tubes.



### GENERAL CHARACTERISTICS

<b>Power*</b>	11,24 W
<b>Power supply</b>	230Vac ± 10% 50Hz
<b>Operation</b>	Maintained (SA), Not Maintained (SE), Rest Mode
<b>Standard</b>	EN 60598-1, EN 60598-2-2, EN 60598-2-22, EN 1838, UNI 11222
<b>Protection grade</b>	IP65, IP42, IK08
<b>Autonomy</b>	1h, 3h
<b>Working temp.</b>	-10°C ÷ +50°C
<b>Driver</b>	Electronic Driver
<b>Mounting</b>	wall, ceiling, recessed, suspended ceiling, electrified track
<b>Housing</b>	White Polycarbonate RAL 9003
<b>Optics</b>	Symmetrical, white
<b>Diffuser</b>	Transparent Polycarbonate
<b>Light source</b>	LED

\* Indicative power for comparison with fluorescent tube fixtures



Power* (W)	• Dimensions (mm) •			Visibility distance
	L	B	H	
11, 24	300	138	55	24m

\* Indicative power for comparison with fluorescent tube lighting

### SIGN DIFFUSER VISIBILITY FLAG 24M



4117 LABELS AS PER TABLE

supplied

### SAFETY SIGNALING (Visibility distance VD in table)



4124 SCREEN WITH LEFT/RIGHT ARROWS

to be ordered separately

4125 SCREEN WITH DOWN ARROWS

to be ordered separately

4126 SCREEN WITH UP ARROWS

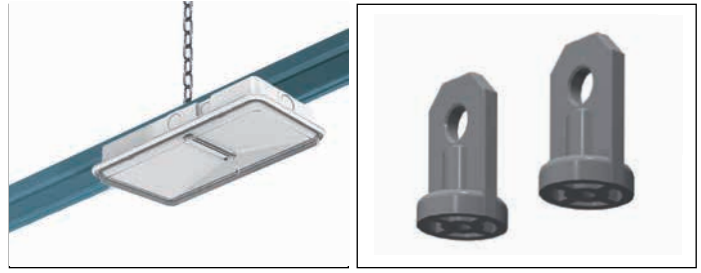
to be ordered separately

## SUSPENSION MOUNTING



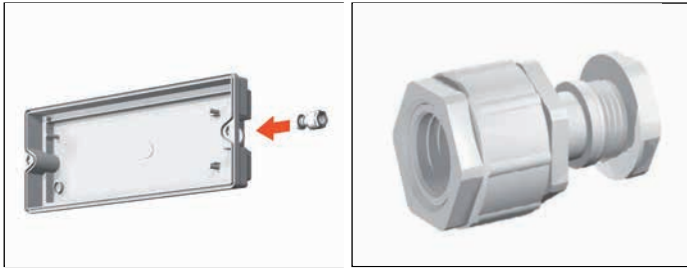
**3723** SUSPENSION HOOKS *to be ordered separately*

## ELECTRIFIED TRACK MOUNTING



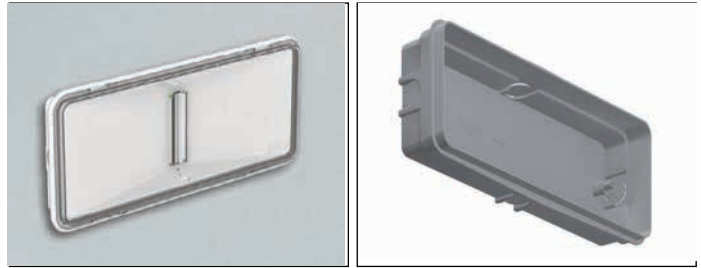
**3723** SUSPENSION HOOKS *to be ordered separately*

## Ø 16 OR Ø 20 MOUNTING



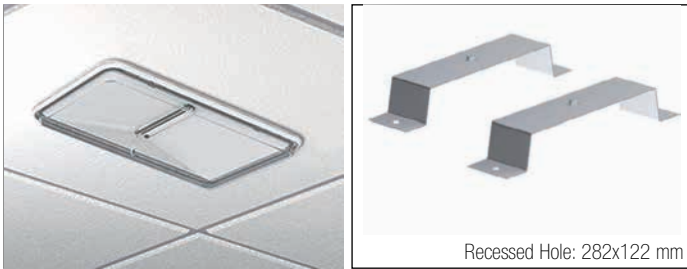
**3727** PG16/PG20 CABLE GLAND *supplied*

## RECESSED MOUNTING



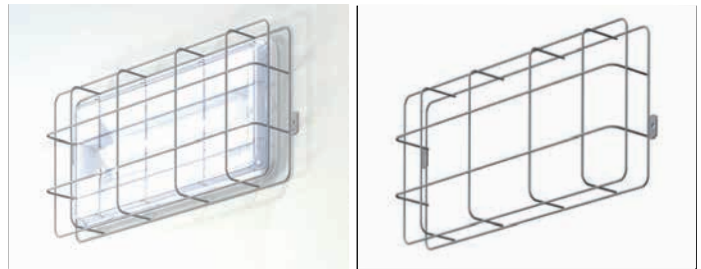
**2742** IP 65 RECESS BOX *to be ordered separately*

## RECESSED MOUNTING ON SUSPENDED CEILING OR PLASTERBOARD



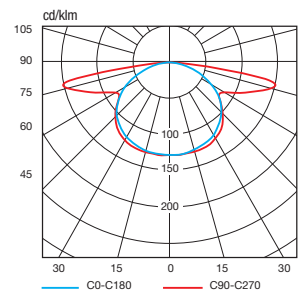
**2751** FALSE CEILING BRACKETS *to be ordered separately*

## PROTECTION GRID



**3907** PROTECTIVE GRID *to be ordered separately*

## Polar Diagram



## BCS

### Battery Control System IP42

W*	Order code	Description	Model	Autonomy	Battery	N° LED	Flux SE lm 1h	Flux SE lm 3h	Flux SA lm	Power consump. max W	Weight kg	Pack single
11	<b>4113</b>	EUROCOMP LED IP42 SESA 1/3H LI-FE	SE/SA	1/3h	LiFe 3,2V 0,5Ah	16	120	40	120	2,5	0,8	1/12
24	<b>4114</b>	EUROCOMP LED IP42 SESA 1/3H LI-FE	SE/SA	1/3h	LiFe 3,2V 1,5Ah	16	350	70	200	4	0,8	1/12

## BCS

### Battery Control System IP65

W*	Order code	Description	Model	Autonomy	Battery	N° LED	Flux SE lm 1h	Flux SE lm 3h	Flux SA lm	Power consump. max W	Weight kg	Pack single
11	<b>4115</b>	EUROCOMP LED IP65 SESA 1/3H LI-FE	SE/SA	1/3h	LiFe 3,2V 0,5Ah	16	120	40	120	2,5	1	1/12
24	<b>4116</b>	EUROCOMP LED IP65 SESA 1/3H LI-FE	SE/SA	1/3h	LiFe 3,2V 1,5Ah	16	350	70	200	4	1	1/12

\* Indicative power for comparison with fluorescent tube fixtures \*\* Minimum flux guaranteed according to EN 60598-2-22