

MODEL : SC-810

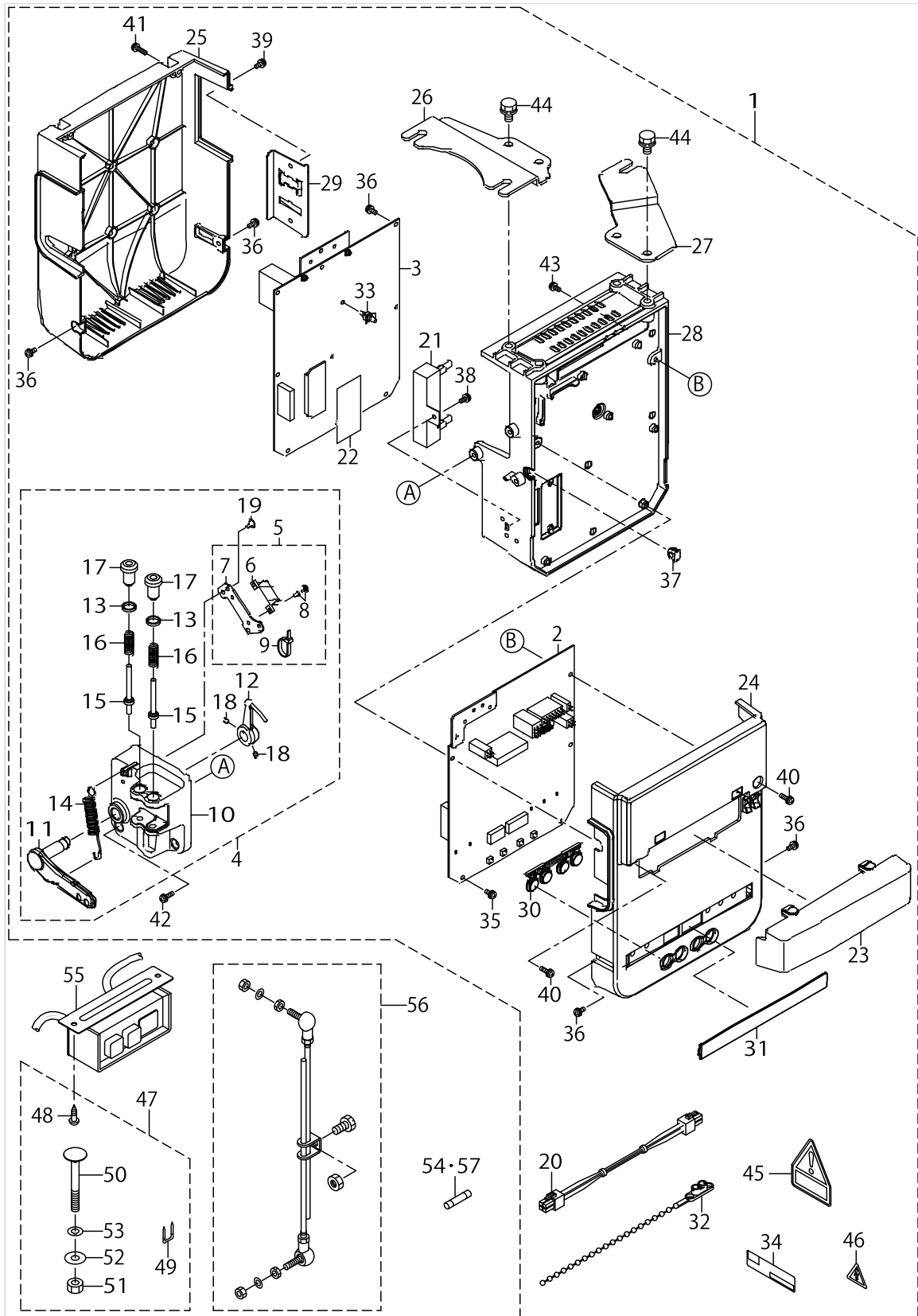
List No : 1473-01

PARTS LIST

Published:05/12/2017

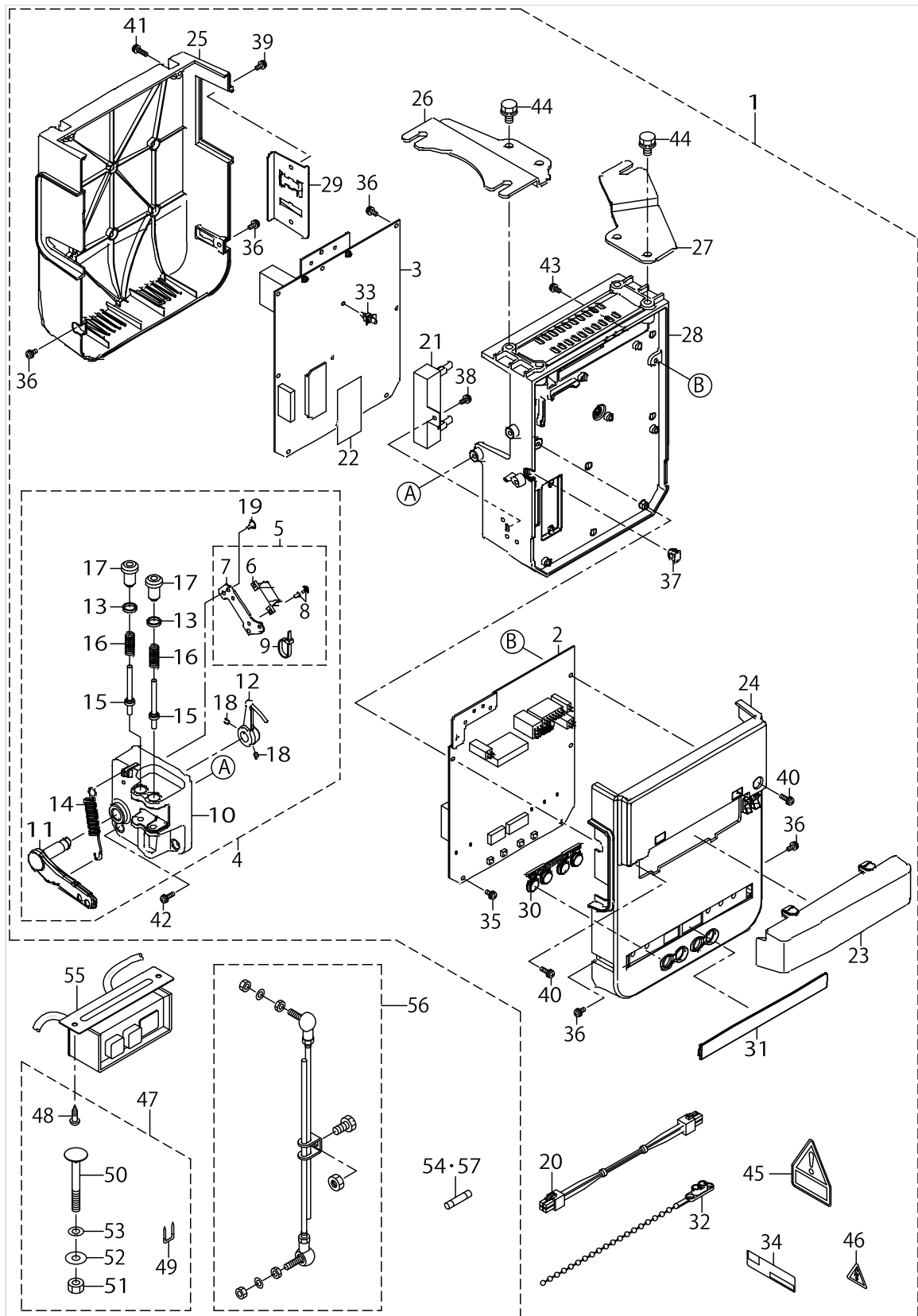
CONTENTS

SC-810.....	1
HOW TO MAKE USE OF THIS PARTS LIST	5



SC-810

No.	Supply Code	Parts No.	Replacement	Parts name	Remarks	Choice	Step	Level	Cons	Qty	Rep. QTY
1	D	40051422		PSC UNIT 1PHASE 200-240V PFL						1	
2		40050386		CTL_PCB_ASSY				*		1	
3		40072352		PWR PCB ASSY				*		1	
4	D	40051433		PEDAL_SENSEN_B_ASSY				*		1	
5	D	40051429		SENSOR COIL HOLD B ASSY				*		1	
6	D	40051446		SENSOR COIL B				*		1	
7		40042136		COIL_BASE				*		1	
8		40052809		NYLON_RIVET				*		2	
9		EA9500B0100		CABLE BAND				*		1	
10		40042130		PEDAL_SENSOR_BASE				*		1	
11	D	40042131		PEDAL_LEVER				*		1	
12		40042133		PEDAL_LEVER_B				*		1	
13		40006202		ADJUST_NUT				*		2	
14		40006207		FRONT_SPRING				*		1	
15		40006208		SPRING_SHAFT_A				*		2	
16		40049426		SPRING_C				*		2	
17		40006212		ADJUST_SCREW				*		2	
18		SM8040612TP		SCREW M4 L=6				*		2	
19		SV4030601SR		SCREW M3 L=6				*		2	
20		40016469		DC POWER SUPPLY CORD ASSY				*		1	
21		40030709		RESISTANCE ASSY				*		1	
22		40072029		LAMBDA GEL SHEET 35-50				*		1	
23		40042122		CONNECTOR_COVER				*		1	
24		40042123		FRONT_COVER				*		1	
25		40042124		REAR_COVER				*		1	
26		40042125		BOX_BRACKET_L				*		1	
27		40042126		BOX_BRACKET_R				*		1	
28		40042127		FRAME				*		1	
29		40042128		HOUSING_PLATE				*		1	
30		40043342		KEY_TOP				*		1	
31		40042137		LED_COVER				*		1	
32		KX000000280		BEAD BAND				*		2	
33		KX000000220		LOCKING CIRCUIT BOARD SUPPORT				*		1	
34		40051437		RATING_LABEL_B_DRAWING				*		1	
35		SL4041081SC		SCREW M4 L=10				*		5	
36		SL4041081SC		SCREW M4 L=10				*		14	
37		M1013110000		CORD BUSH A				*		1	
38		SL4041091SC		SCREW M4 L=10				*		1	
39		SL4041081SC		SCREW M4 L=10				*		2	
40		SL4041491SC		SCREW 4 X 14				*		2	
41		SL4041691SC		SCREW M4 L=16				*		2	
42		SL4041491SC		SCREW 4 X 14				*		3	
43		SL4041091SE		SCREW M4 L=10				*		3	
44		SL9081693SE		HEXAGON SCREW WITH WASHER				*		4	
45		CM300400701		VOLTAGE CAUTION LABEL				*		1	
46		CM300100001		LABEL				*		1	



SC-810

No.	Supply Code	Parts No.	Replacement	Parts name	Remarks	Choice	Step	Level	Cons	Qty	Rep. QTY
47	R	M4401471AA0	SK3512001SE	BOX ACCESSORIE PART A ASM.		A				1	2.00
47	R	M4401471AA0	WS0820002KR	BOX ACCESSORIE PART A ASM.		A				1	3.00
47	R	M4401471AA0	NM6080002SC	BOX ACCESSORIE PART A ASM.		A				1	3.00
47	R	M4401471AA0	MAO11532000	BOX ACCESSORIE PART A ASM.		A				1	5.00
47	R	M4401471AA0	MTSHJ100003	BOX ACCESSORIE PART A ASM.		A				1	3.00
47	R	M4401471AA0	WP0851846SC	BOX ACCESSORIE PART A ASM.		A				1	3.00
48		SK3512001SE		WOOD SCREW D=5.1 L=20				*		2	
49		MAO11532000		CORD STAPLE				*		5	
50		MTSHJ100003		BOLT				*		3	
51		NM6080002SC		NUT M8				*		3	
52		WP0851846SC		WASHER 8.5X22.0X1.8				*		3	
53		WS0820002KR		SPRING WASHER, M8				*		3	
54		KF000000030		SLO-BLO FUSE						1	
55		40051434		AC_POWER_SUPPLY_CORD_A						1	
56		40042134		CONNECTING_ROD_ASSY						1	
57		KF000000080		SLO-BLO FUSE						1	

HOW TO MAKE USE OF THIS PARTS LIST

1.As to "#01" and "#02" refer to the "Note" given at the bottom of the respective pages.

2.Codes on the "Qty" column

- Each numeral indicates the number of parts required.
- "0.1" and "2.5" indicate the length (in meters) of the respective parts.

3.Parentheses mean that the corresponding part is a subpart that constructs an assembly part.

4.Dotted lines on the Figures indicate assembly parts.

1. リストページの# 0 1、# 0 2の印は、ページ下の"注記"の説明を参照下さい。
2. 数量欄の数字は、個数を表し、0. 1、2. 5等の数値は、長さ（単位メートル）を表します。
3. 数量欄の（ ）は、組部品を構成している子部品であることを意味します。
4. イラストページの-----枠は、組構成であることを意味します。

NUMERICAL INDEX OF PARTS

PART NO	PAGE	REF NO.	PART NO	PAGE	REF NO.
40006202	2	13	SL4041091SC	2	38
40006207	2	14	SL4041091SE	2	43
40006208	2	15	SL4041491SC	2	42
40006212	2	17	SL4041691SC	2	41
40016469	2	20	SL9081693SE	2	44
40030709	2	21	SM8040612TP	2	18
40042122	2	23	SV4030601SR	2	19
40042123	2	24	WP0851846SC	4	52
40042124	2	25	WS0820002KR	4	53
40042125	2	26			
40042126	2	27			
40042127	2	28			
40042128	2	29			
40042130	2	10			
40042131	2	11			
40042133	2	12			
40042134	4	56			
40042136	2	7			
40042137	2	31			
40043342	2	30			
40049426	2	16			
40050386	2	2			
40051422	2	1			
40051429	2	5			
40051433	2	4			
40051434	4	55			
40051437	2	34			
40051446	2	6			
40052809	2	8			
40072029	2	22			
40072352	2	3			
CM300100001	2	46			
CM300400701	2	45			
EA9500B0100	2	9			
KF000000030	4	54·57			
KF000000080	4	54·57			
KX000000220	2	33			
KX000000280	2	32			
M1013110000	2	37			
M4401471AA0	4	47			
MAO11532000	4	49			
MTSHJ100003	4	50			
NM6080002SC	4	51			
SK3512001SE	4	48			
SL4041081SC	2	39			