

MODEL : SC-804

List No : 1246-02

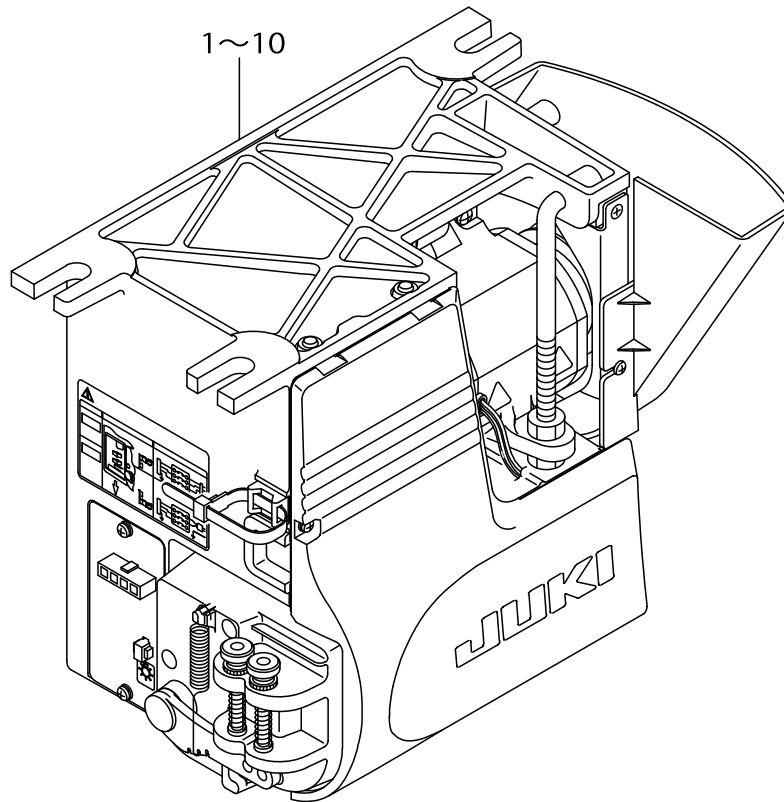
PARTS LIST

Published:05/12/2017

CONTENTS

STANDARD MOTOR COMBINATION LIST.....	1
PSC UNIT COMPONENTS (1)	3
PSC UNIT COMPONENTS (2)	5
ACCESSORIE PART COMPONENTS	9
CP-660 PANEL COMPONENTS.....	11
CP-60 PANEL COMPONENTS	13
HOW TO MAKE USE OF THIS PARTS LIST	15

STANDARD MOTOR COMBINATION LIST



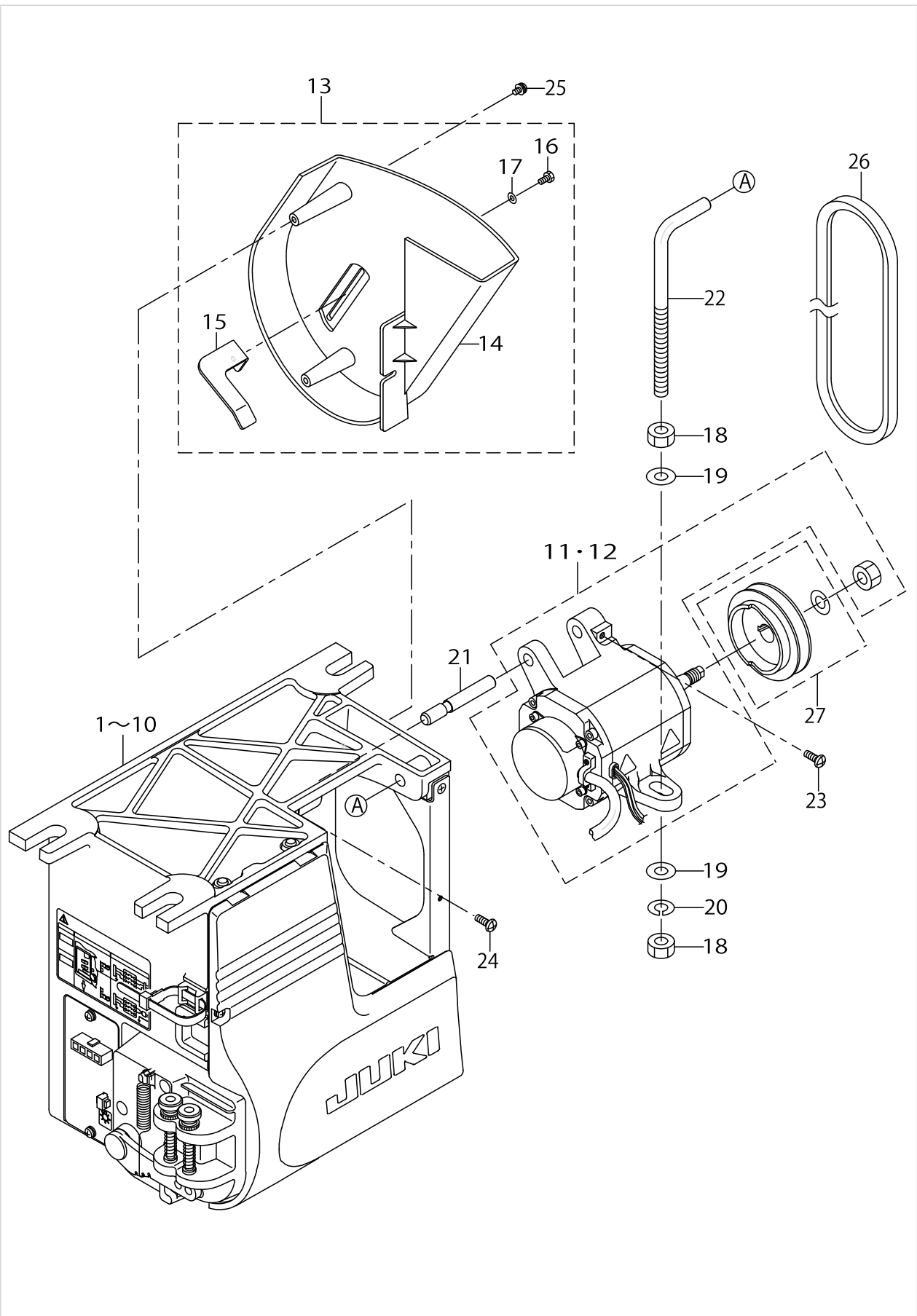
REF. NO.	PART NO.	BOX TYPE	EXPORT		JUS		CE	*OPTION
			3Ø 200~240V	1Ø 200~240V	3Ø 200~240V	1Ø 100~120V	1Ø 220~240V	A
1	M2012-464-BA0	BB	○					
2	M2112-464-BA0	BE	○					○
3	M2012-464-CA0	CB		○				
4	M2112-464-CA0	CE		○				○
5	M2012-464-DA0	DB					○	
6	M2112-464-DA0	DE					○	○
7	M2012-464-EA0	EB			○			
8	M2112-464-EA0	EE			○			○
9	M2012-464-FA0	FB				○		
10	M2112-464-FA0	FE				○		○

*OPTION A:ED-2,BOBBIN THREAD REMAINING AMOUNT DETECTION.
 *BOX TYPE IS DESCRIBED AFTER MODEL NAME IN RATING PLATE.

STANDARD MOTOR COMBINATION LIST

No.	Supply Code	Parts No.	Replacement	Parts name	Remarks	Choice	Step	Level	Cons	Qty	Rep. QTY
1		M2012464BA0		GENERAL. EXPORT P3-200VOS						1	
2		M2112464BA0		GENERAL. EXPORT P3-200VOA						1	
3		M2012464CA0		GENERAL. EXPORT P1-200VOS						1	
4		M2112464CA0		GENERAL. EXPORT P1-200VOA						1	
5		M2012464DA0		SC-804CEP1-230VOS						1	
6		M2112464DA0		SC-804CEP1-230VOA						1	
7		M2012464EA0		SC-804JUSP3-200VOS						1	
8		M2112464EA0		SC-804JUSP3-200VOA						1	
9		M2012464FA0		SC-804JUSP1-110VOS						1	
10		M2112464FA0		SC-804JUSP1-110VOA						1	

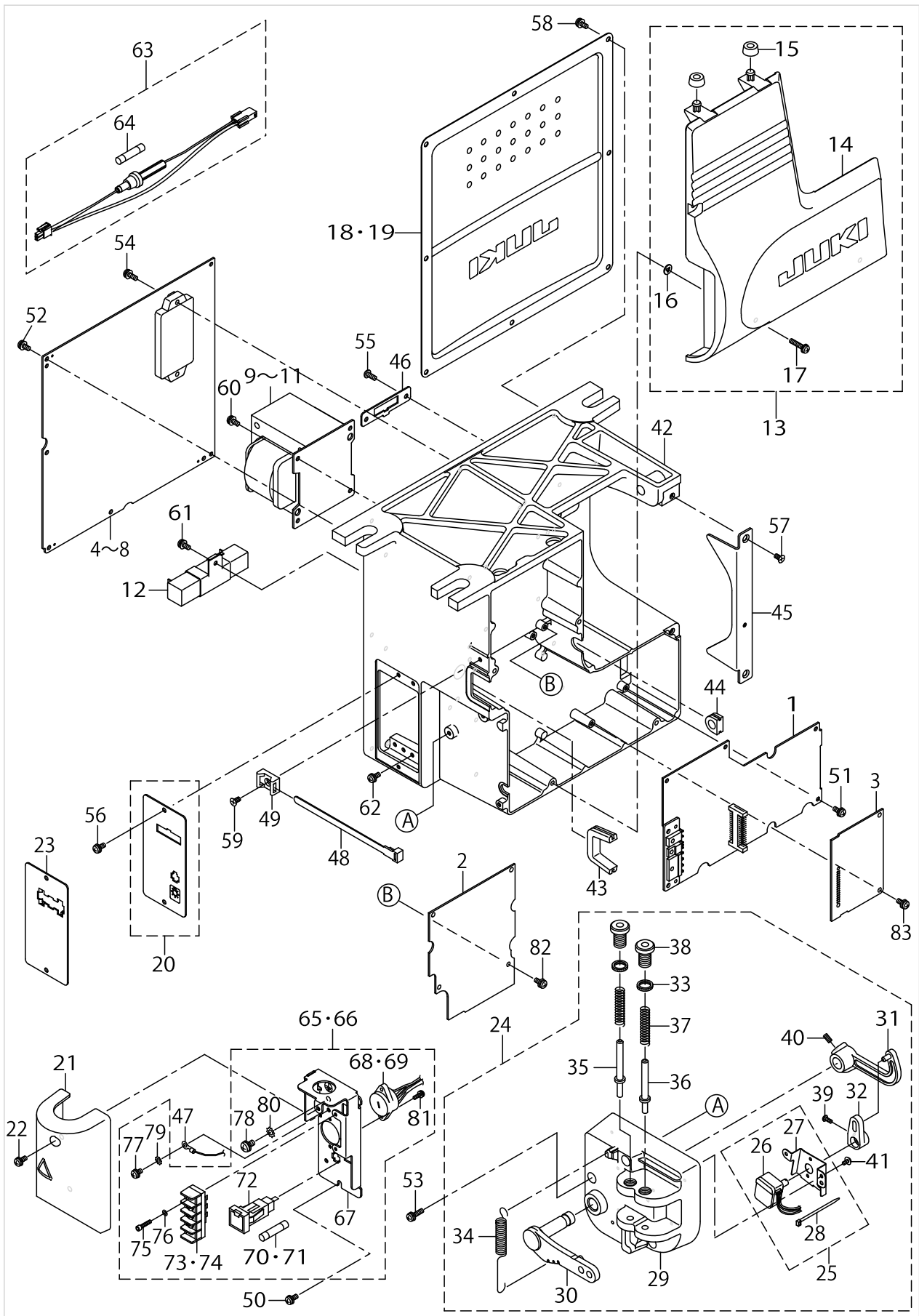
PSC UNIT COMPONENTS (1)



PSC UNIT COMPONENTS (1)

No.	Supply Code	Parts No.	Replacement	Parts name	Remarks	Choice	Step	Level	Cons	Qty	Rep. QTY
1		M2002464BA0		GENERAL. EXPORT P3-200VOS	FOR M201-2-464-BA0					1	
2		M2102464BA0		GENERAL. EXPORT P3-200VOA	FOR M211-2-464-BA0					1	
3		M2002464CA0		GENERAL. EXPORT P1-200VOS	FOR M201-2-464-CA0					1	
4		M2102464CA0		GENERAL. EXPORT P1-200VOA	FOR M211-2-464-CA0					1	
5		M2002464DA0		SC-804CEP1-230VOS	FOR M201-2-464-DA0					1	
6		M2102464DA0		SC-804CEP1-230VOA	FOR M211-2-464-DA0					1	
7		M2002464EA0		SC-804JUSP3-200VOS	FOR M201-2-464-EA0					1	
8		M2102464EA0		SC-804JUSP3-200VOA	FOR M211-2-464-EA0					1	
9		M2002464FA0		SC-804JUSP1-110VOS	FOR M201-2-464-FA0					1	
10		M2102464FA0		SC-804JUSP1-110VOA	FOR M211-2-464-FA0					1	
11	D	M6001461CA0		MOTOR ASM.,C	FOR GENERAL EXPORT					1	
12	D	M6001461DA0		MOTOR ASM.,D	FOR CE & JUS					1	
13	D	M3601461AA0		PULLEY COVER A ASM.						1	
14	R	M3601461000	M3601461AA0	PULLEY COVER				*		1	1.00
15	D	M3602461000		BELT STOPPER				*		1	
16		SM9040803SF		SCREW M4X8				*		1	
17		WP0430801SE		WASHER 4.3X9X0.8				*		1	
18		NM6100011SF		NUT M10						2	
19	R	WP1052001SE	WP1052001SC	WASHER 10.5X21X2						2	1.00
20		WS1020002KR		SPRINGWASHER, M10						1	
21		M4201461000		MOTOR SUPPORT SHAFT						1	
22		M4202461000		MOTOR SUPPORT BOLT						1	
23		SM4051405SE		SCREW M5 L=14						1	
24		SM4051405SE		SCREW M5 L=14						1	
25		SL4040891SC		SCREW M4 L=8						3	
26		MTJVH00390A		V-BELT, 39 INCH						1	
27	R	MTSP0070AA0	MTSP00700B0	MOTOR PULLEY ASM. P.C.D. 70						1	1.00

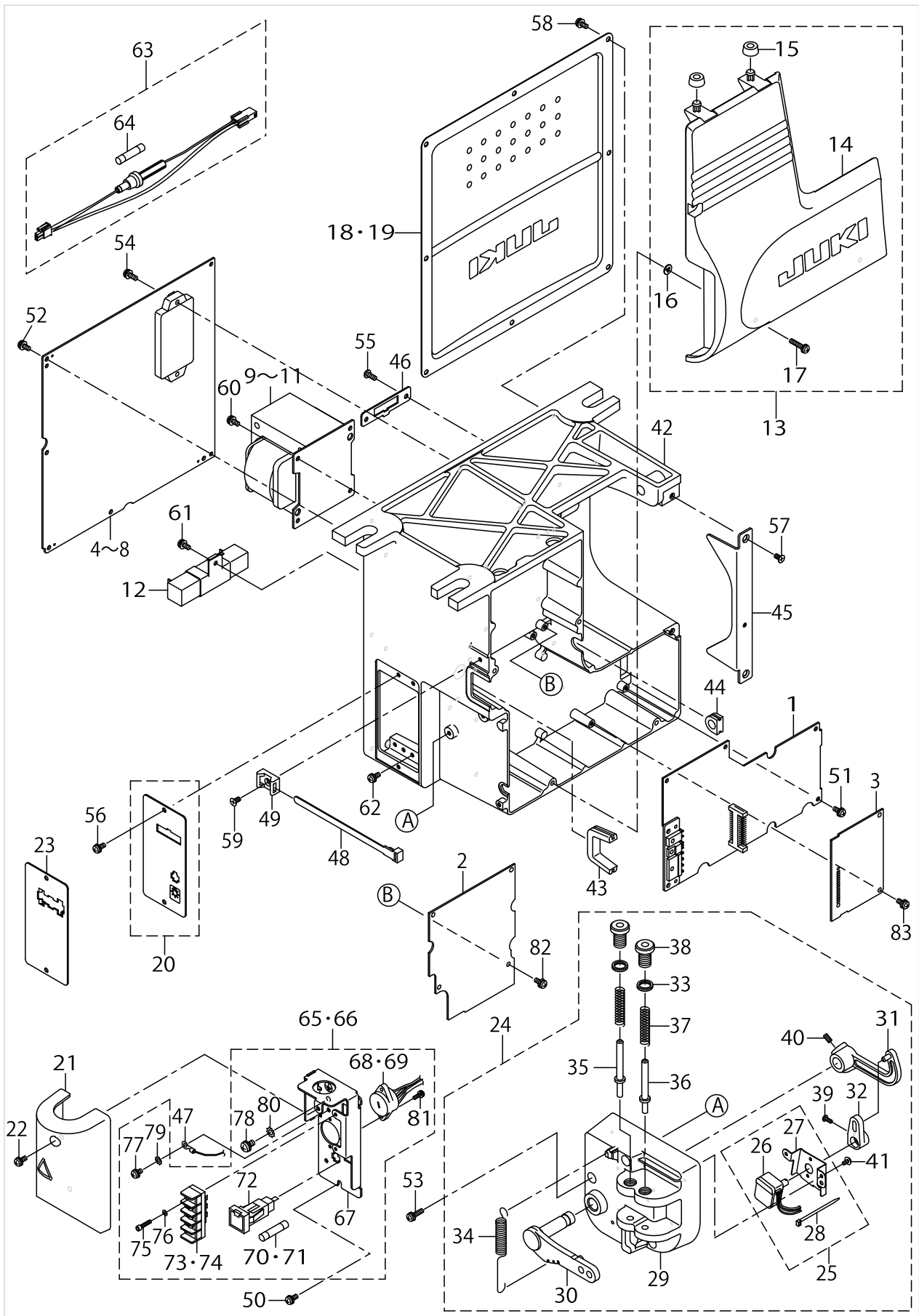
PSC UNIT COMPONENTS (2)



PSC UNIT COMPONENTS (2)

No.	Supply Code	Parts No.	Replacement	Parts name	Remarks	Choice	Step	Level	Cons	Qty	Rep. QTY
1	D	M8601471DAA		CTL CIRCUIT BOARD DA ASM.						1	
2		M8601464AA0		AC5 CIRCUIT BOARD A ASM.						1	
3	D	M8606461AA0		OP CIRCUIT BOARD ASM. A						1	
4	D	M8604461AA0		PWR-U CIRCUIT BOARD A ASM.	FOR EXPORT 3-PHASE 200~240V					1	
5	D	M8603461AA0		PWR-E CIRCUIT BOARD A ASM.	FOR EXPORT 1-PHASE 200~240V					1	
6		M8605461AA0		PWR-C CIRCUIT BOARD A ASM.	FOR CE					1	
7	D	M8603461BA0		PWR-S CIRCUIT BOARD B ASM.	FOR JUS 1-00~120V					1	
8	D	M8604461BA0		PWR-U CIRCUIT BOARD B ASM.	FOR JUS 2-00~240V					1	
9		M8501471BA0		POWER TRANSFORMER B ASM.	FOR 200V(-EXCEPT CE)					1	
10		M8501471CA0		POWER TRANSFORMER C ASM.	FOR JUS 1-00~120V					1	
11	D	M8501471DA0		POWER TRANSFORMER D ASM.	FOR CE					1	
12		M8502461AA0		RESISTOR A ASM.						1	
13		M3201462CA0		BOX FRONT COVER C ASM.						1	
14		M3201461000		FRONT COVER				*		1	
15		M3202461000		BOX FRONT COVER SUPPORT RUBBER				*		2	
16		M8002430000		STOPPER				*		3	
17		SL4042091SC		SCREW M4X0.7 L=20				*		3	
18	D	M3401461000		BOX REAR PANEL						1	
19		M3401461BA0		BOX REAR COVER B ASM.	FOR CE,JUS					1	
20		M3802461AA0		CONNECTOR FIXED PLATE A ASM.	FOR GENERAL EXPORT					1	
21	D	M3806461AA0		TERMINAL BASE COVER A ASM.	FOR JUS					1	
22		SL4041081SC		SCREW M4 L=10	FOR JUS					2	
23		M3804461000		CONNECTOR FIXED PLATE(CE)	FOR CE					1	
24	D	M4001461BA0		PEDAL SENSOR B ASM.						1	
25	D	M4006461AA0		SENSOR INSTALLING PLATE A ASM.				*		1	
26	R	M8508461AA0	M4006461AA0	SENSOR A ASM.				*		1	1.00
27		M4006461000		SENSOR INSTALLING PLATE				*		1	
28		EA9500B0100		CABLE BAND				*		1	
29		M4001461000		PEDAL SENSOR BASE				*		1	
30		M4002461000		PEDAL LEVER				*		1	
31	R	M4004461000	40006204	PEDAL RING				*		1	1.00
32		M4005461000		VOLUME LINK				*		1	
33		M2010110000		ADJUST NUT				*		2	
34		M4007351000		FRONT SPRING				*		1	
35		M4008351000A		SPRING SHAFT A				*		1	
36		M4009351000A		SPRING SHAFT B				*		1	
37		M4011351000		SPRING B				*		2	
38		M4012351000		ADJUST SCREW				*		2	
39		SM4030801SF		SCREW M3X0.5 L=8				*		1	
40		SM8040802TP		SCREW M4X8				*		2	
41		SV4030601SR		SCREW M3 L=6				*		2	
42	D	M3001461000		ELECTRICAL BOX						1	

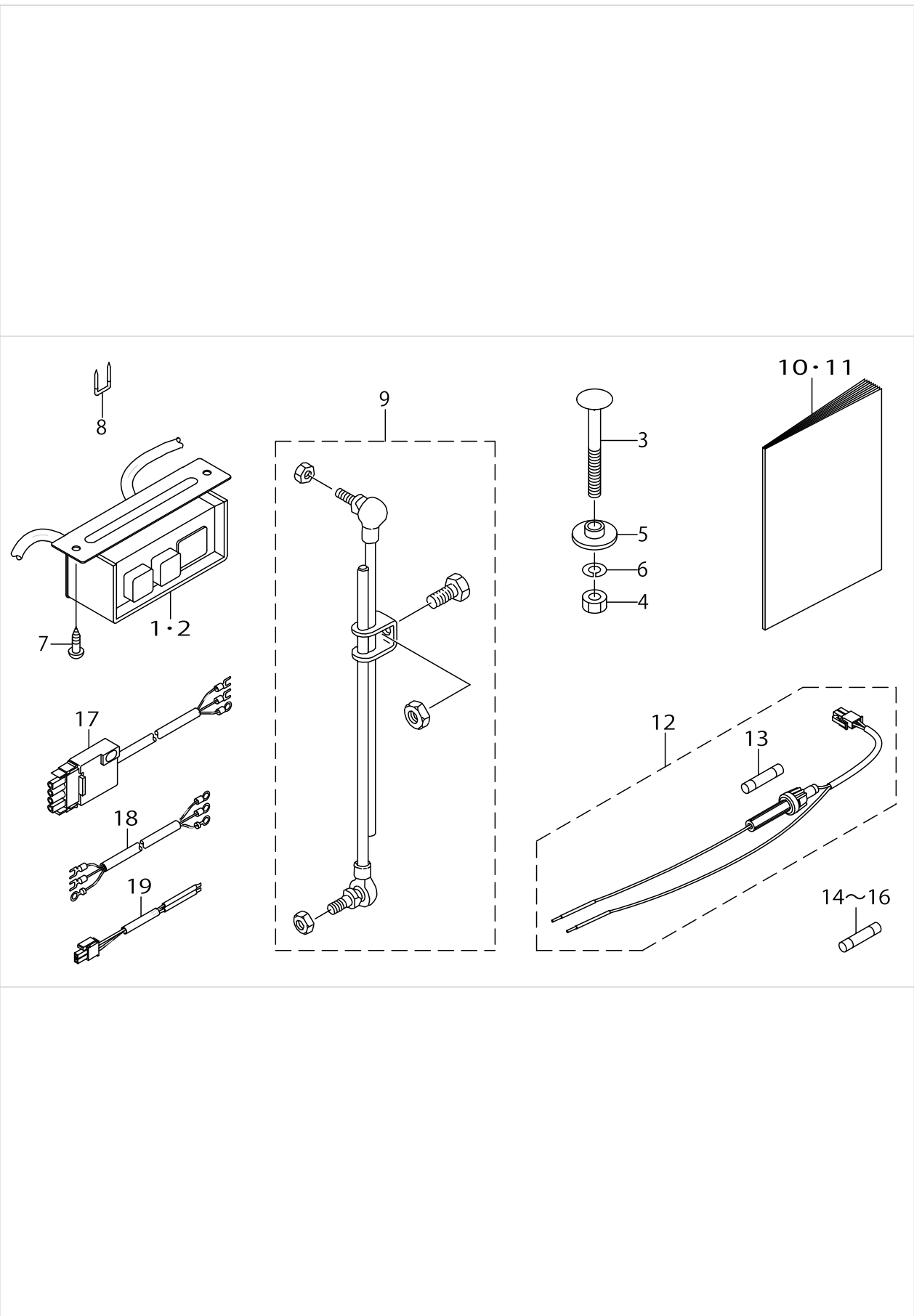
PSC UNIT COMPONENTS (2)



PSC UNIT COMPONENTS (2)

No.	Supply Code	Parts No.	Replacement	Parts name	Remarks	Choice	Step	Level	Cons	Qty	Rep. QTY
43		M3002461000		RUBBER BUSH A						1	
44	D	M1014110000		CORD BUSH B						1	
45	D	M3801461000		PULLEY COVER INS-TALLING PLATE						1	
46		M3803461000		MOTOR CONNECTOR FIXED PLATE						1	
47	D	M8503461DA0		FG CORD D ASM.	FOR JUS					1	
48		HX00292000A		CONNECTING PART						1	
49		HX004540000		TIE MOUNT						1	
50		SL4041081SF		SCREW M4 L=10	FOR JUS					2	
51		SL4041081SF		SCREW M4 L=10						6	
52		SL4041081SF		SCREW M4 L=10						5	
53		SL4041681SF		SCREW M4 L=16						3	
54		SL4041281SF		SCREW M4 L=12						2	
55		SL4041081SF		SCREW M4 L=10						2	
56		SL4041081SC		SCREW M4 L=10						2	
57		SM1040801SC		SCREW M4X0.7 L=8						2	
58		SL4041081SC		SCREW M4 L=10						8	
59		SM1040801SC		SCREW M4X0.7 L=8						1	
60		SL4041081SF		SCREW M4 L=10						4	
61		SL4041081SF		SCREW M4 L=10						1	
62		SL4041091SE		SCREW M4 L=10						4	
63	D	M8511461AA0		LAMP FUSE A ASM.	FOR JUS					1	
64		HF001400500		TIME LAG FUSE 5A	FOR JUS			*		1	
65		M3805461BA0		TERMINAL BASE B ASM.	FOR JUS 1-00~120V					1	
66	D	M3805461AA0		TERMINAL BASE A ASM.	FOR JUS 2-00~240V					1	
67		M3805461000		TERMINAL BASE	FOR JUS			*		1	
68		M8510461BA0		VOLTAGE SELECTOR B ASM.	FOR JUS 1-00~120V			*		1	
69	D	M8510461AA0		VOLTAGE SELECTOR A ASM.	FOR JUS 2-00~240V			*		1	
70		HF0079040P0		FUSE 4A	FOR JUS 1-00~120V			*		1	
71		HF0079020P0		FUSE 2A	FOR JUS 1-00~120V			*		1	
72	D	HF009511000		FUSE HOLDER	FOR JUS			*		1	
73		HK04905003B		TERMINAL BASE	FOR JUS			*		1	
74		HK04905002A		TERMINAL BASE 2P	FOR JUS			*		1	
75		SM6031402TP		SCREW	FOR JUS			*		2	
76		WS0310002KP		SPRING WASHER	FOR JUS			*		2	
77		SL4040885SH		SCREW M4 L=8	FOR JUS			*		1	
78		SL4051085SH		SCREW M5X10	FOR JUS			*		1	
79		WT0430001KN		TOOTHED WASHER	FOR JUS			*		1	
80	D	WT0530001KN		TOOTHED LOCK WASHER	FOR JUS			*		1	
81		SL4031081SF		SCREW M3 L=10	FOR JUS			*		2	
82		SL4041081SF		SCREW M4 L=10						4	
83		SL4041081SF		SCREW M4 L=10						2	

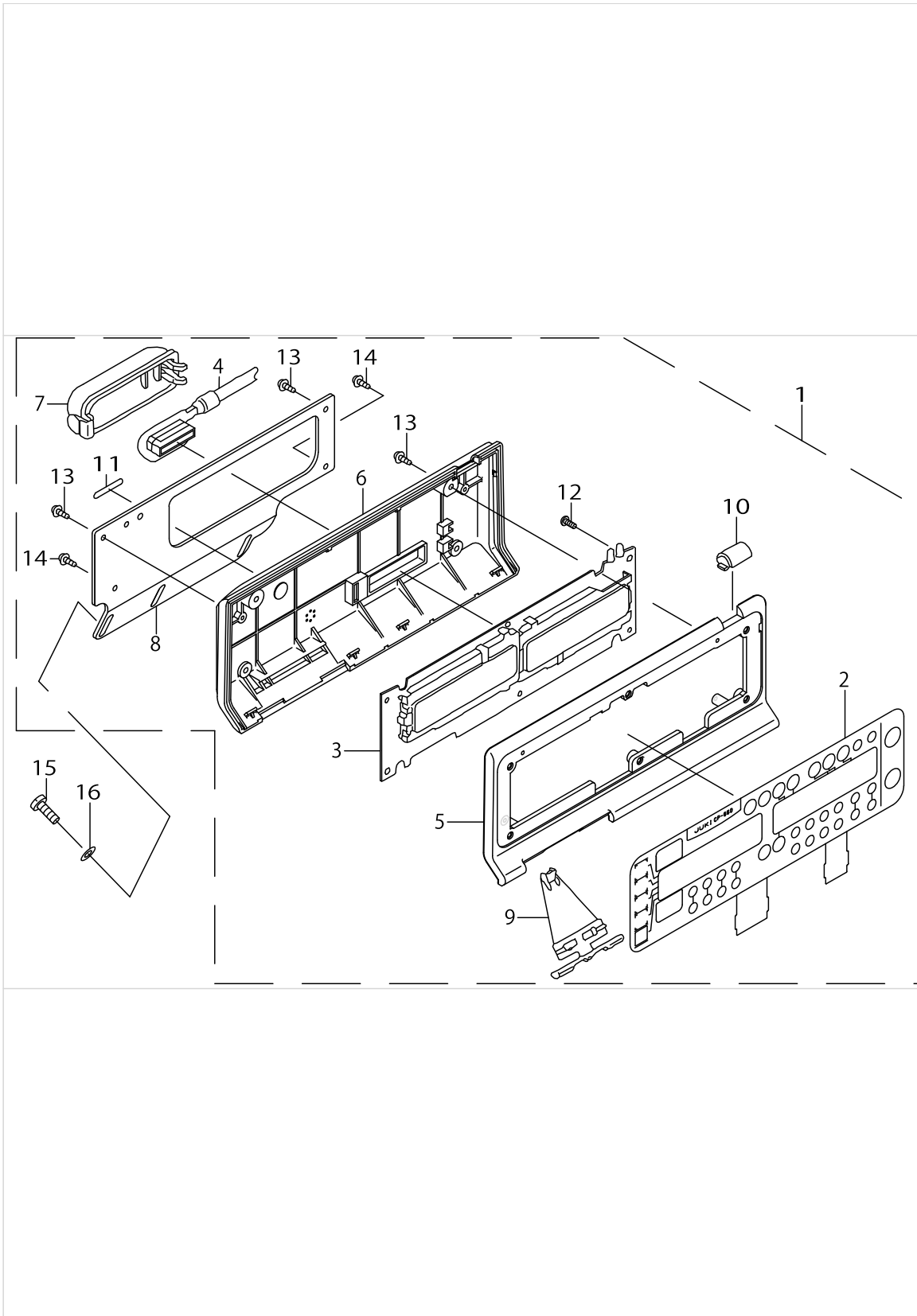
ACCESSORIE PART COMPONENTS



ACCESSORIE PART COMPONENTS

No.	Supply Code	Parts No.	Replacement	Parts name	Remarks	Choice	Step	Level	Cons	Qty	Rep. QTY
1		M6101461AA0		POWER SWITCH A ASM.	FOR 3-PH-ASE 200~240V					1	
2		M6101461CA0		POWER SWITCH C ASM.	FOR 1-PH-ASE 200~240V					1	
3	D	D8211555D00		BOLT						3	
4		NM6080003SC		NUT M8						3	
5	D	M4205461000		WASHER						3	
6		WS0820002KR		SPRING WASHER, M8						3	
7		SK3512001SF		WOOD SCREW						2	
8		MA011532000		CORD STAPLE						5	
9	R	D7114555BAB	22958458	CONNECTING ROD ASM. (B)						1	1.00
10		29319506		SC-804 INSTRUCTION MANUAL						1	
11		29319605		SC-804 INSTRUCTION MANUAL						1	
12	D	M8525351AA0		LAMP FUSE HOLDER ASM., A						1	
13		M9644110000		FUSE 8A				*		1	
14		HF0079020P0		FUSE 2A	FOR 200~240V					1	
15		HF0079040P0		FUSE 4A	FOR JUS 1-00~120V					1	
16		HF0078020P0		FUSE 2A	FOR CE					1	
17		M6105461DAA		PSC UNIT CABLE ASM.(CE)	FOR CE					1	
18		M6102461DAA		AC INPUT CABLE ASM.(CE)	FOR CE					1	
19		M8526351AA0		LAMP CORD ASM., A	FOR JUS					1	

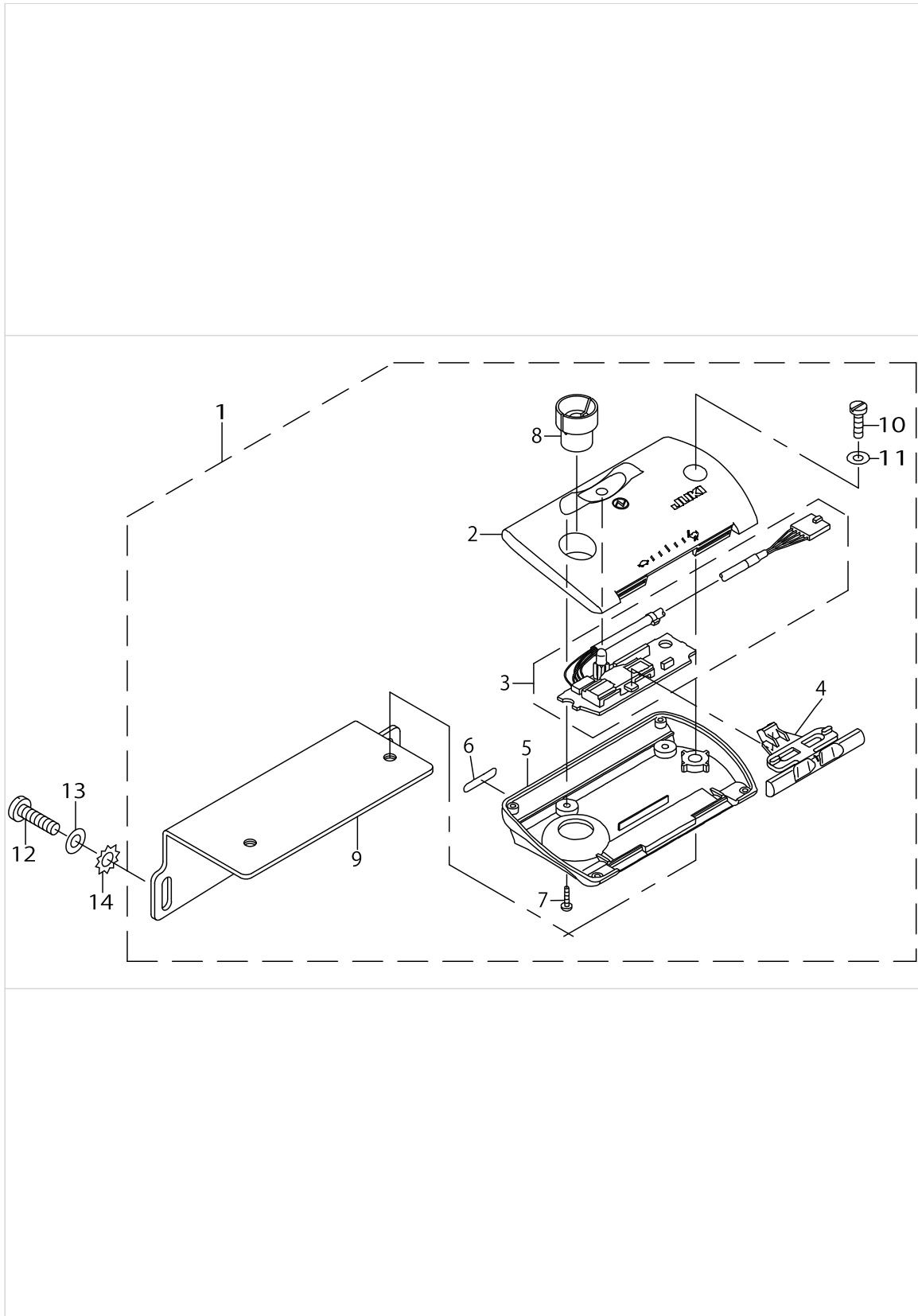
CP-660 PANEL COMPONENTS



CP-660 PANEL COMPONENTS

No.	Supply Code	Parts No.	Replacement	Parts name	Remarks	Choice	Step	Level	Cons	Qty	Rep. QTY
1	D	M2501387BAA		CP-660 PANEL ASM. TYPE. B						1	
2		M11013870A0		CP-660 SWITCH BOARD ASM.				*		1	
3	D	M8601382AA0		CP-630 CIRCUIT BOARD A ASM.				*		1	
4		M8501378AA0		CORD A ASM.				*		1	
5		M1008371000		FRONTPANELTYPEB				*		1	
6		M1009371000		BACK PANEL TYPE B				*		1	
7		M1003371000		CORD EXIT COVER				*		1	
8	D	M1010371000		PANEL BRACKET LH				*		1	
9		M1003370000		SPEED ADJUSTING KNOB, A				*		1	
10	D	M1005371000		INDICATION WINDOW				*		1	
11	D	M7001370B0A		NAME PLATE TYPE B0A				*		1	
12		SM4030801SC		SCREW M3 X 8				*		6	
13		SV4031006SR		SCREW M3 L=10				*		4	
14		SV4031605SR		SCREW M3 L=16				*		2	
15		SS6111210SP		SCREW11/64-40L=12						2	
16		WP0450801SD		WASHER 4.5X10X0.8						2	

CP-60 PANEL COMPONENTS



CP-60 PANEL COMPONENTS

No.	Supply Code	Parts No.	Replacement	Parts name	Remarks	Choice	Step	Level	Cons	Qty	Rep. QTY
1	D	M2501383BBA		CP-60 UNIT TYPE B						1	
2		M1001370000		TOP PANEL				*		1	
3	D	M8601370DA0		CP-30 CIRCUIT BOARD ASM.,D				*		1	
4		M1003370000		SPEED ADJUSTING KNOB, A				*		1	
5		M1002370000		BOTTOM PANEL				*		1	
6	D	M7001370B0A		NAME PLATE TYPE B0A				*		1	
7		ST4031021SR		TAPPING SCREW D=3 L=10				*		2	
8	D	M1005370000		COLLAR				*		1	
9		M1004370000		BRACKET				*		1	
10	R	SS7121810SN	SS7121610SP	SCREW 3/16-28 L=18				*		2	1.00
11		WP0531001SC		WASHER				*		2	
12		SS6111210SP		SCREW 1/64-40L=12						2	
13		WP0450801SD		WASHER 4.5X10X0.8						2	
14		WT0530002KS		TOOTHED WASHER D=5.3						2	

HOW TO MAKE USE OF THIS PARTS LIST

1.As to "#01" and "#02" refer to the "Note" given at the bottom of the respective pages.

2.Codes on the "Qty" column

- Each numeral indicates the number of parts required.
- "0.1" and "2.5" indicate the length (in meters) of the respective parts.

3.Parentheses mean that the corresponding part is a subpart that constructs an assembly part.

4.Dotted lines on the Figures indicate assembly parts.

1. リストページの# 0 1、# 0 2の印は、ページ下の"注記"の説明を参照下さい。
2. 数量欄の数字は、個数を表し、0. 1、2. 5等の数値は、長さ（単位メートル）を表します。
3. 数量欄の（ ）は、組部品を構成している子部品であることを意味します。
4. イラストページの-----枠は、組構成であることを意味します。

NUMERICAL INDEX OF PARTS

PART NO	PAGE	REF NO.	PART NO	PAGE	REF NO.	PART NO	PAGE	REF NO.
29319506	10	10·11	M2112464BA0	2	1~10	M6105461DAA	10	17
29319605	10	10·11	M2112464CA0	2	1~10	M7001370B0A	12	11
D7114555BAB	10	9	M2112464DA0	2	1~10	M7001370B0A	14	6
D8211555D00	10	3	M2112464EA0	2	1~10	M8002430000	6	16
EA9500B0100	6	28	M2112464FA0	2	1~10	M8501378AA0	12	4
HF001400500	8	64	M2501383BBA	14	1	M8501471BA0	6	9~11
HF0078020P0	10	14~16	M2501387BAA	12	1	M8501471CA0	6	9~11
HF0079020P0	8	70·71	M3001461000	6	42	M8501471DA0	6	9~11
HF0079020P0	10	14~16	M3002461000	8	43	M8502461AA0	6	12
HF0079040P0	8	70·71	M3201461000	6	14	M8503461DA0	8	47
HF0079040P0	10	14~16	M3201462CA0	6	13	M8508461AA0	6	26
HF009511000	8	72	M3202461000	6	15	M8510461AA0	8	68·69
HK04905002A	8	73·74	M3401461000	6	18·19	M8510461BA0	8	68·69
HK04905003B	8	73·74	M3401461BA0	6	18·19	M8511461AA0	8	63
HX00292000A	8	48	M3601461000	4	14	M8525351AA0	10	12
HX004540000	8	49	M3601461AA0	4	13	M8526351AA0	10	19
M1001370000	14	2	M3602461000	4	15	M8601370DA0	14	3
M1002370000	14	5	M3801461000	8	45	M8601382AA0	12	3
M1003370000	12	9	M3802461AA0	6	20	M8601464AA0	6	2
M1003370000	14	4	M3803461000	8	46	M8601471DAA	6	1
M1003371000	12	7	M3804461000	6	23	M8603461AA0	6	4~8
M1004370000	14	9	M3805461000	8	67	M8603461BA0	6	4~8
M1005370000	14	8	M3805461AA0	8	65·66	M8604461AA0	6	4~8
M1005371000	12	10	M3805461BA0	8	65·66	M8604461BA0	6	4~8
M1008371000	12	5	M3806461AA0	6	21	M8605461AA0	6	4~8
M1009371000	12	6	M4001461000	6	29	M8606461AA0	6	3
M1010371000	12	8	M4001461BA0	6	24	M9644110000	10	13
M1014110000	8	44	M4002461000	6	30	MAO11532000	10	8
M11013870A0	12	2	M4004461000	6	31	MTJVH00390A	4	26
M2002464BA0	4	1~10	M4005461000	6	32	MTSP0070AA0	4	27
M2002464CA0	4	1~10	M4006461000	6	27	NM6080003SC	10	4
M2002464DA0	4	1~10	M4006461AA0	6	25	NM6100011SF	4	18
M2002464EA0	4	1~10	M4007351000	6	34	SK3512001SF	10	7
M2002464FA0	4	1~10	M4008351000A	6	35	SL4031081SF	8	81
M2010110000	6	33	M4009351000A	6	36	SL4040885SH	8	77
M2012464BA0	2	1~10	M4011351000	6	37	SL4040891SC	4	25
M2012464CA0	2	1~10	M4012351000	6	38	SL4041081SC	6	58
M2012464DA0	2	1~10	M4201461000	4	21	SL4041081SC	8	58
M2012464EA0	2	1~10	M4202461000	4	22	SL4041081SF	8	83
M2012464FA0	2	1~10	M4205461000	10	5	SL4041091SE	8	62
M2102464BA0	4	1~10	M6001461CA0	4	11·12	SL4041281SF	8	54
M2102464CA0	4	1~10	M6001461DA0	4	11·12	SL4041681SF	8	53
M2102464DA0	4	1~10	M6101461AA0	10	1·2	SL4042091SC	6	17
M2102464EA0	4	1~10	M6101461CA0	10	1·2	SL4051085SH	8	78
M2102464FA0	4	1~10	M6102461DAA	10	18	SM1040801SC	8	59

NUMERICAL INDEX OF PARTS

PART NO	PAGE	REF NO.
SM4030801SC	12	12
SM4030801SF	6	39
SM4051405SE	4	24
SM6031402TP	8	75
SM8040802TP	6	40
SM9040803SF	4	16
SS6111210SP	12	15
SS6111210SP	14	12
SS7121810SN	14	10
ST4031021SR	14	7
SV4030601SR	6	41
SV4031006SR	12	13
SV4031605SR	12	14
WP0430801SE	4	17
WP0450801SD	12	16
WP0450801SD	14	13
WP0531001SC	14	11
WP1052001SE	4	19
WS0310002KP	8	76
WS0820002KR	10	6
WS1020002KR	4	20
WT0430001KN	8	79
WT0530001KN	8	80
WT0530002KS	14	14